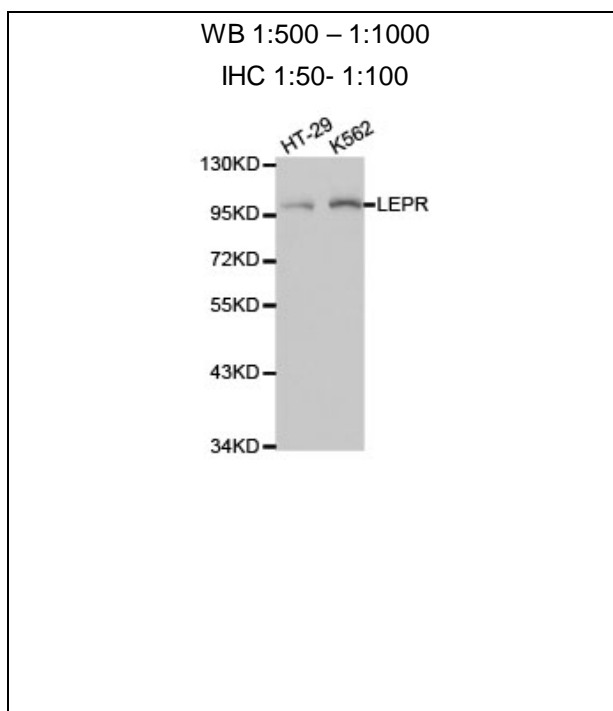




## LEPR Polyclonal Antibody

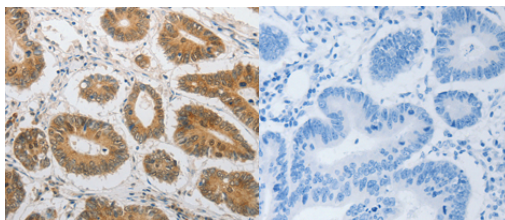
E92999

- Catalog Number:** E92999  
**Amount:** 100ul  
**Background:** The protein encoded by this gene belongs to the gp130 family of cytokine receptors that are known to stimulate gene transcription via activation of cytosolic STAT proteins. This protein is a receptor for leptin (an adipocyte-specific hormone that regulates body weight), and is involved in the regulation of fat metabolism, as well as in a novel hematopoietic pathway that is required for normal lymphopoiesis. Mutations in this gene have been associated with obesity and pituitary dysfunction. Alternatively spliced transcript variants encoding different isoforms have been described for this gene. It is noteworthy that this gene and LEPROT gene (GeneID:54741) share the same promoter and the first 2 exons, however, encode distinct proteins (PMID:9207021).  
**Species:** Rabbit  
**Isotype:** IgG  
**Storage/Stability:** Store at -20oC or -80oC. Avoid freeze / thaw cycles. Buffer: PBS with 0.02% sodium azide, 50% glycerol, pH7.3.  
**Synonyms:** OBR; OB-R; CD295; LEP-R  
**Immunogen:** A synthetic peptide of human LEPR  
**Purification:** Affinity purification  
**Reactivity:** H M R  
**Applications:** WB IHC  
**Molecular Weight:** 96kDa  
**Swiss-Prot No. :** P48357  
**Gene ID:** 3953



**For Research Use Only**

Western blot analysis of extracts of various celllines,  
using LEPR antibody.(1: HT-29 cell lysate2: K562 cell  
lysate)



Immunohistochemistryof paraffin-embeddedHuman  
colon cancer tissue usingLEPRantibody.