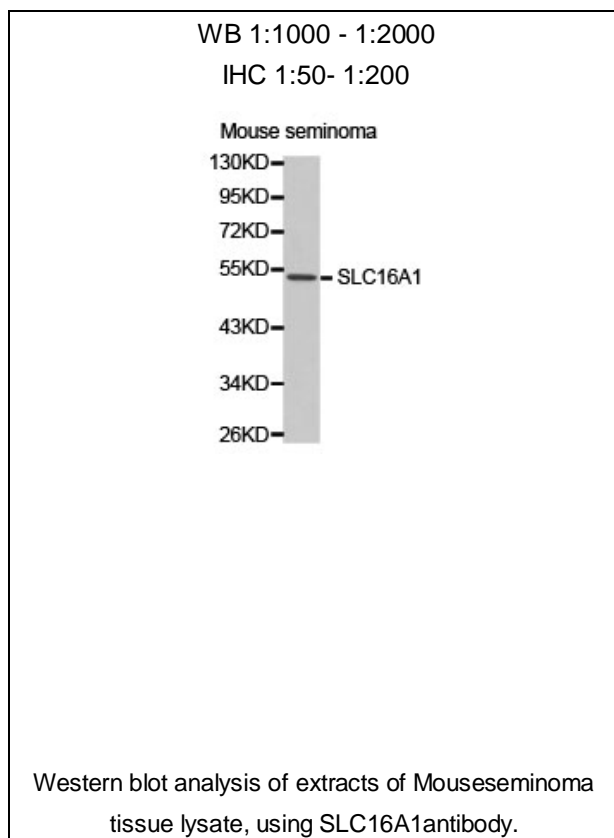




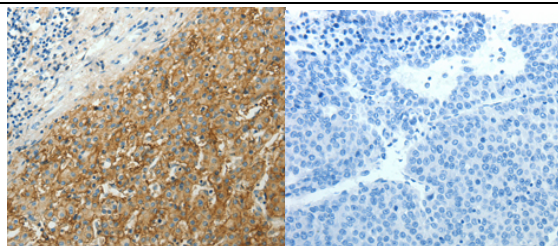
SLC16A1 Polyclonal Antibody

E93013

- Catalog Number:** E93013
Amount: 100ul
Background: The protein encoded by this gene is a proton-linked monocarboxylate transporter that catalyzes the movement of many monocarboxylates, such as lactate and pyruvate, across the plasma membrane. Mutations in this gene are associated with erythrocyte lactate transporter defect. Alternatively spliced transcript variants have been found for this gene.
Species: Rabbit
Isotype: IgG
Storage/Stability: Store at -20oC or -80oC. Avoid freeze / thaw cycles. Buffer: PBS with 0.02% sodium azide, 50% glycerol, pH7.3.
Synonyms: MCT; HHF7; MCT1
Immunogen: A synthetic peptide of human SLC16A1
Purification: Affinity purification
Reactivity: H M R
Applications: WB IHC
Molecular Weight: 54kDa
Swiss-Prot No. : P53985
Gene ID: 6566



For Research Use Only



Immunohistochemistry of paraffin-embedded Human liver cancer tissue using SLC16A1 antibody.