



MMP25 Polyclonal Antibody

E93032

Catalog Number: E93032

Amount: 100ul

Background: Proteins of the matrix metalloproteinase (MMP) family are involved in the breakdown of extracellular matrix in normal physiological processes, such as embryonic development, reproduction, and tissue remodeling, as well as in disease processes, such as arthritis and metastasis. Most MMPs are secreted as inactive proproteins which are activated when cleaved by extracellular proteinases. However, the protein encoded by this gene is a member of the membrane-type MMP (MT-MMP) subfamily, attached to the plasma membrane via a glycosylphosphatidyl inositol anchor. In response to bacterial infection or inflammation, the encoded protein is thought to inactivate alpha-1 proteinase inhibitor, a major tissue protectant against proteolytic enzymes released by activated neutrophils, facilitating the transendothelial migration of neutrophils to inflammatory sites. The encoded protein may also play a role in tumor invasion and metastasis through activation of MMP2. The gene has previously been referred to as MMP20 but has been renamed MMP25.

Species: Rabbit

Isotype: IgG

Storage/Stability: Store at -20oC or -80oC. Avoid freeze / thaw cycles. Buffer: PBS with 0.02% sodium azide, 50% glycerol, pH7.3.

Synonyms: MMP20; MMPL1; MMP-25; MMP20A; MT6MMP; MTMMP6; MT-MMP6; MT6-MMP; MT-MMP 6

Immunogen: A synthetic peptide of human MMP25

Purification: Affinity purification

Reactivity: H M R

Applications: WB IHC

Molecular Weight: 63kDa

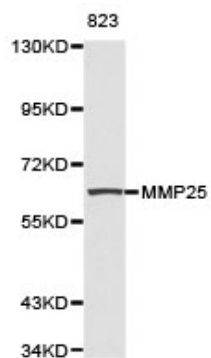
Swiss-Prot No. : Q9NPA2

Gene ID: 64386

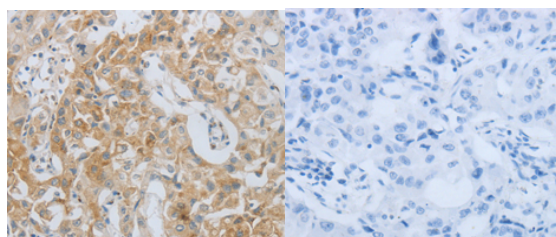
For Research Use Only

WB 1:500 - 1:2000

IHC 1:50- 1:200



Western blot analysis of extracts of 823 cell lysate, using MMP25 antibody.



Immunohistochemistry of paraffin-embedded human lung cancer tissue using MMP25 antibody.