



POMC Polyclonal Antibody

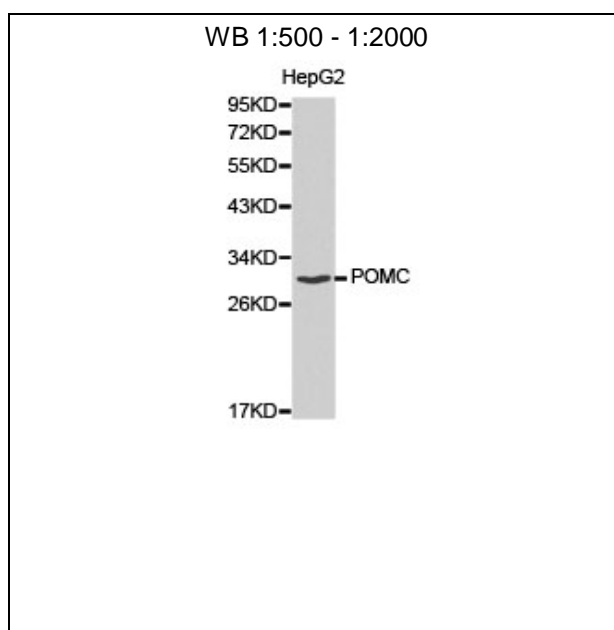
E93038

Catalog Number: E93038**Amount:** 100ul

Background: This gene encodes a polypeptide hormone precursor that undergoes extensive, tissue-specific, post-translational processing via cleavage by subtilisin-like enzymes known as prohormone convertases. There are eight potential cleavage sites within the polypeptide precursor and, depending on tissue type and the available convertases, processing may yield as many as ten biologically active peptides involved in diverse cellular functions. The encoded protein is synthesized mainly in corticotroph cells of the anterior pituitary where four cleavage sites are used; adrenocorticotrophin, essential for normal steroidogenesis and the maintenance of normal adrenal weight, and lipotropin beta are the major end products. In other tissues, including the hypothalamus, placenta, and epithelium, all cleavage sites may be used, giving rise to peptides with roles in pain and energy homeostasis, melanocyte stimulation, and immune modulation.

Species: Rabbit**Isotype:** IgG

Storage/Stability: Store at -20oC or -80oC. Avoid freeze / thaw cycles. Buffer: PBS with 0.02% sodium azide, 50% glycerol, pH7.3.

Synonyms: LPH; MSH; NPP; POC; ACTH; CLIP**Immunogen:** A synthetic peptide of human POMC**Purification:** Affinity purification**Reactivity:** H M R**Applications:** WB**Molecular Weight:** 29kDa**Swiss-Prot No. :** P01189**Gene ID:** 5443**For Research Use Only**

Western blot analysis of extracts of HepG2 cell line,
using POMC antibody..