



CDH1 Polyclonal Antibody

E93044

Catalog Number: E93044**Amount:** 100ul

Background: This gene is a classical cadherin from the cadherin superfamily. The encoded protein is a calcium dependent cell-cell adhesion glycoprotein comprised of five extracellular cadherin repeats, a transmembrane region and a highly conserved cytoplasmic tail. Mutations in this gene are correlated with gastric, breast, colorectal, thyroid and ovarian cancer. Loss of function is thought to contribute to progression in cancer by increasing proliferation, invasion, and/or metastasis. The ectodomain of this protein mediates bacterial adhesion to mammalian cells and the cytoplasmic domain is required for internalization. Identified transcript variants arise from mutation at consensus splice sites. [provided by RefSeq, Jul 2008]

Species: Rabbit**Isotype:** IgG

Storage/Stability: Store at -20oC or -80oC. Avoid freeze / thaw cycles. Buffer: PBS with 0.02% sodium azide, 50% glycerol, pH7.3.

Synonyms: CDH1; Arc-1;CD324 ;CDHE ; ECAD;LCAM ; UVO ;E-Cad/CTF3 ;Uvomorulin;E-Cadherin;

Immunogen: A synthetic peptide of human CDH1

Purification: Affinity purification

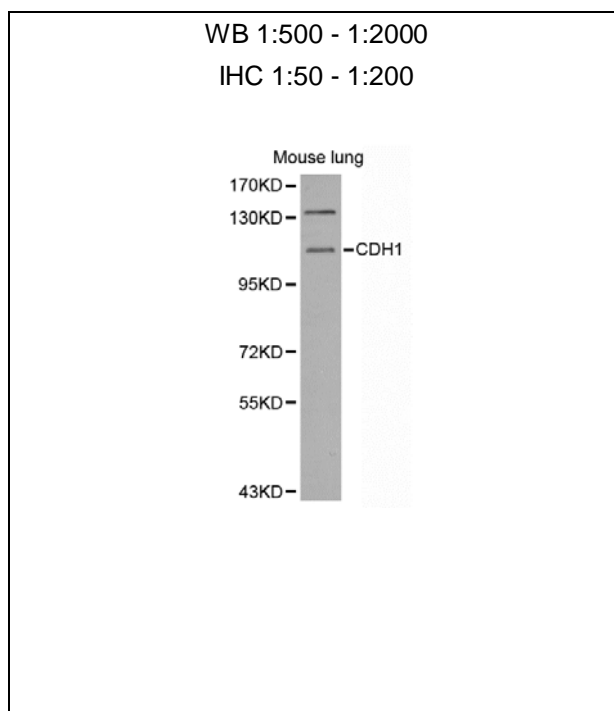
Reactivity: H M R

Applications: WB IHC

Molecular Weight: 135kDa

Swiss-Prot No. : P12830

Gene ID: 999



For Research Use Only

Western blot analysis of extracts of mouse lungcellline,
using CDH1 antibody.