



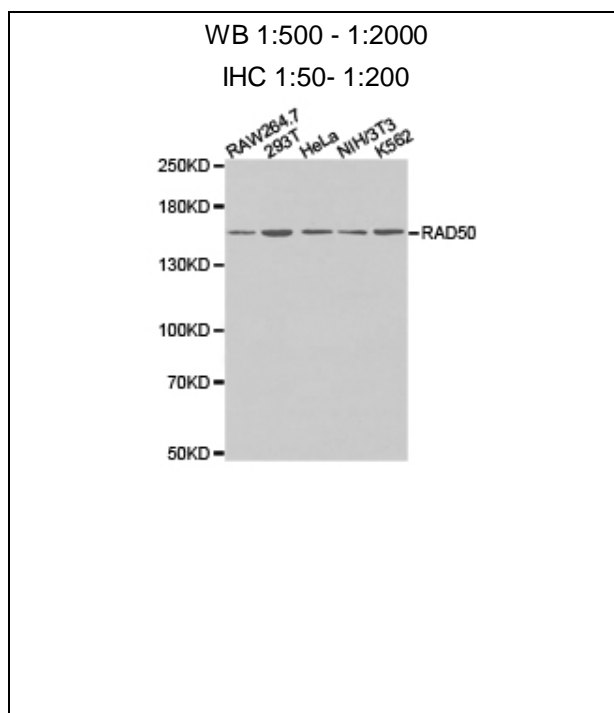
## RAD50 Polyclonal Antibody

**E93078****Catalog Number:** E93078**Amount:** 100ul

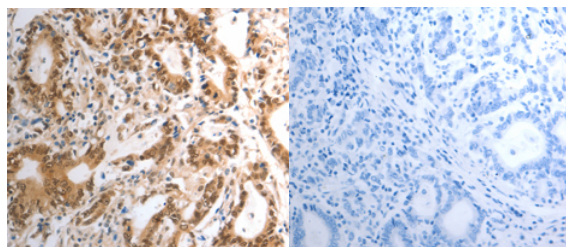
**Background:** The protein encoded by this gene is highly similar to *Saccharomyces cerevisiae* Rad50, a protein involved in DNA double-strand break repair. This protein forms a complex with MRE11 and NBS1. The protein complex binds to DNA and displays numerous enzymatic activities that are required for nonhomologous joining of DNA ends. This protein, cooperating with its partners, is important for DNA double-strand break repair, cell cycle checkpoint activation, telomere maintenance, and meiotic recombination. Knockout studies of the mouse homolog suggest this gene is essential for cell growth and viability. Mutations in this gene are the cause of Nijmegen breakage syndrome-like disorder.

**Species:** Rabbit**Isotype:** IgG

**Storage/Stability:** Store at -20oC or -80oC. Avoid freeze / thaw cycles. Buffer: PBS with 0.02% sodium azide, 50% glycerol, pH7.3.

**Synonyms:** NBSLD; RAD502; hRad50**Immunogen:** A synthetic peptide of humanRAD50**Purification:** Affinity purification**Reactivity:** H M R**Applications:** WB IHC**Molecular Weight:** 154kDa**Swiss-Prot No. :** Q92878**Gene ID:** 10111**For Research Use Only**

Western blot analysis of extracts of various celllines,  
using RAD50antibody.



Immunohistochemistryof paraffin-embeddedhuman  
gastric tissue usingRAD50antibody.