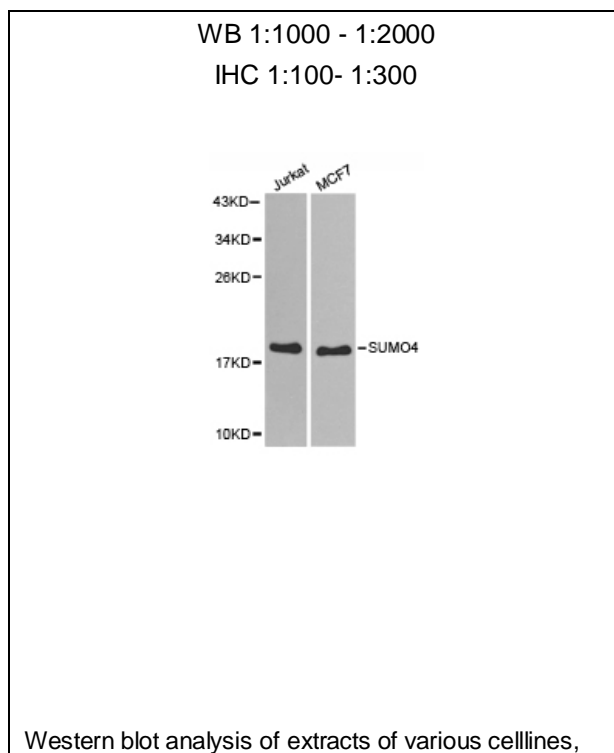




SUMO4 Polyclonal Antibody

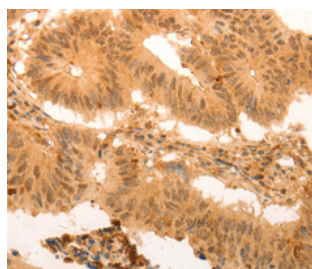
E93100

- Catalog Number:** E93100
Amount: 100ul
Background: This gene is a member of the SUMO gene family. This family of genes encode small ubiquitin-related modifiers that are attached to proteins and control the target proteins' subcellular localization, stability, or activity. The protein described in this record is located in the cytoplasm and specifically modifies IKBA, leading to negative regulation of NF-kappa-B-dependent transcription of the IL12B gene. A specific polymorphism in this SUMO gene, which leads to the M55V substitution, has been associated with type I diabetes. The RefSeq contains this polymorphism.
Species: Rabbit
Isotype: IgG
Storage/Stability: Store at -20oC or -80oC. Avoid freeze / thaw cycles. Buffer: PBS with 0.02% sodium azide, 50% glycerol, pH7.3.
Synonyms: IDDM5; SMT3H4; SUMO-4; dJ281H8.4;
Immunogen: A synthetic peptide of human SUMO4
Purification: Affinity purification
Reactivity: H M R
Applications: WB IHC
Molecular Weight: 12kDa
Swiss-Prot No. : Q6EEV6
Gene ID: 387082



For Research Use Only

using SUMO4 antibody.



Immunohistochemistry of paraffin-embedded Human colon cancer tissue using SUMO4 Antibody at dilution 1/100.