



## ARF6 Polyclonal Antibody

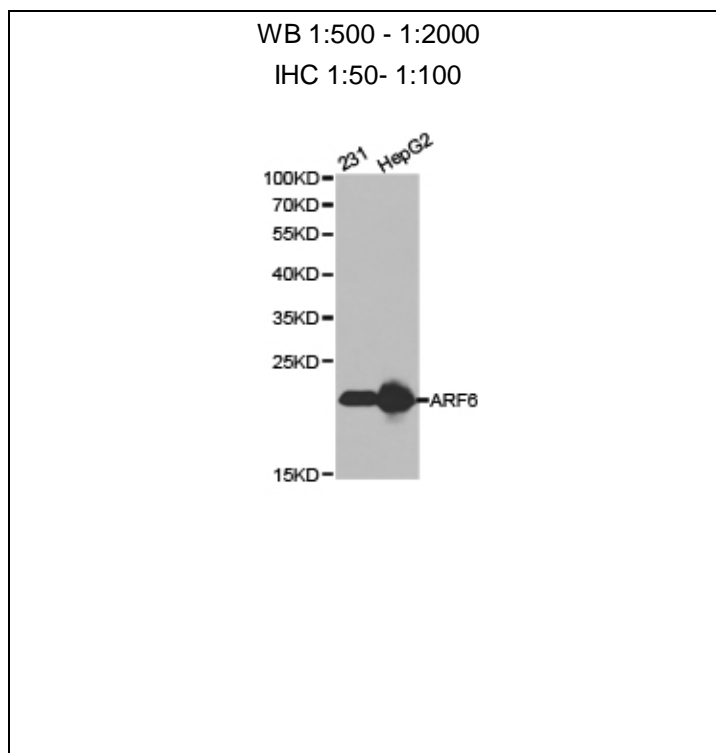
E93162

**Catalog Number:** E93162**Amount:** 100ul

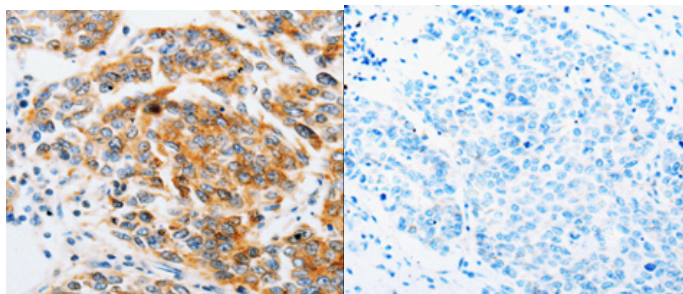
**Background:** This gene encodes a member of the human ARF gene family, which is part of the RAS superfamily. The ARF genes encode small guanine nucleotide-binding proteins that stimulate the ADP-ribosyltransferase activity of cholera toxin and play a role in vesicular trafficking and as activators of phospholipase D. The product of this gene is localized to the plasma membrane, and regulates vesicular trafficking, remodelling of membrane lipids, and signaling pathways that lead to actin remodeling. A pseudogene of this gene is located on chromosome 7.

**Species:** Rabbit**Isotype:** IgG

**Storage/Stability:** Store at -20oC or -80oC. Avoid freeze / thaw cycles. Buffer: PBS with 0.02% sodium azide, 50% glycerol, pH7.3.

**Synonyms:****Immunogen:** A synthetic peptide of human ARF6**Purification:** Affinity purification**Reactivity:** H M R**Applications:** WBIHC**Molecular Weight:** 20kDa**Swiss-Prot No. :** P62330**Gene ID:** 382**For Research Use Only**

Western blot analysis of extracts of various celllines, using ARF6 antibody.



Immunohistochemistry of paraffin-embedded human breast cancer tissue using ARF6 antibody.