



CUL3 Polyclonal Antibody

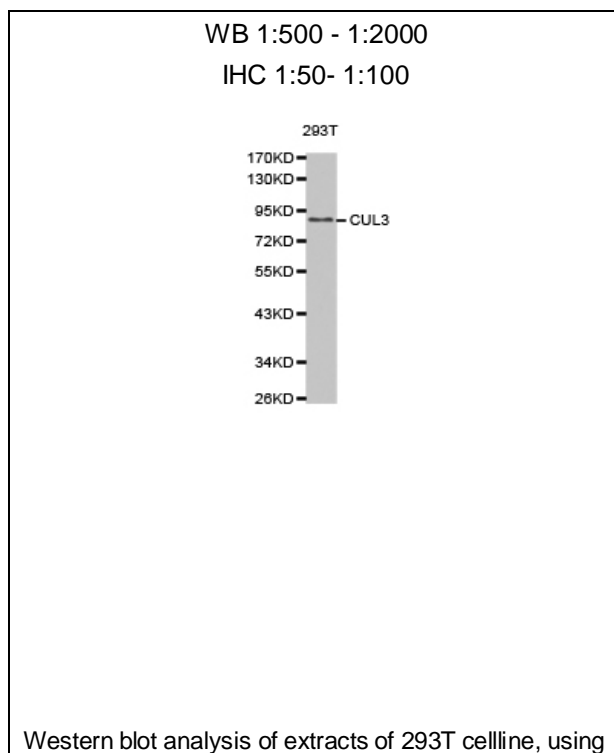
E93168

Catalog Number: E93168**Amount:** 100ul

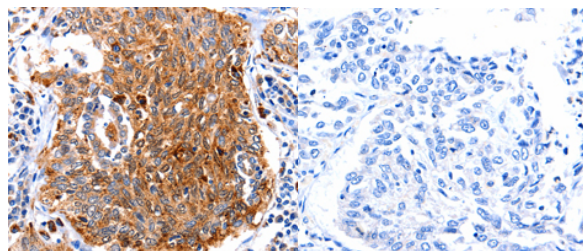
Background: This gene encodes a member of the cullin protein family. The encoded protein plays a critical role in the polyubiquitination and subsequent degradation of specific protein substrates as the core component and scaffold protein of an E3 ubiquitin ligase complex. Complexes including the encoded protein may also play a role in late endosome maturation. Mutations in this gene are a cause of type 2E pseudohypoaldosteronism. Alternatively spliced transcript variants encoding multiple isoforms have been observed for this gene. [provided by RefSeq, Mar 2012]

Species: Rabbit**Isotype:** IgG

Storage/Stability: Store at -20oC or -80oC. Avoid freeze / thaw cycles. Buffer: PBS with 0.02% sodium azide, 50% glycerol, pH7.3.

Synonyms: CUL-3; PHA2E;**Immunogen:** Recombinant protein of human CUL3**Purification:** Affinity purification**Reactivity:** H M R**Applications:** WB IHC**Molecular Weight:** 89kDa**Swiss-Prot No. :** Q13618**Gene ID:** 8452**For Research Use Only**

CUL3antibody.



Immunohistochemistry of paraffin-embedded human lung cancer tissue using CUL3 antibody.