



## DUSP6 Polyclonal Antibody

E93171

**Catalog Number:** E93171**Amount:** 100ul

**Background:** The protein encoded by this gene is a member of the dual specificity protein phosphatase subfamily. These phosphatases inactivate their target kinases by dephosphorylating both the phosphoserine/threonine and phosphotyrosine residues. They negatively regulate members of the mitogen-activated protein (MAP) kinase superfamily (MAPK/ERK, SAPK/JNK, p38), which are associated with cellular proliferation and differentiation. Different members of the family of dual specificity phosphatases show distinct substrate specificities for various MAP kinases, different tissue distribution and subcellular localization, and different modes of inducibility of their expression by extracellular stimuli. This gene product inactivates ERK2, is expressed in a variety of tissues with the highest levels in heart and pancreas, and unlike most other members of this family, is localized in the cytoplasm. Two transcript variants encoding different isoforms have been found for this gene.

**Species:** Rabbit**Isotype:** IgG

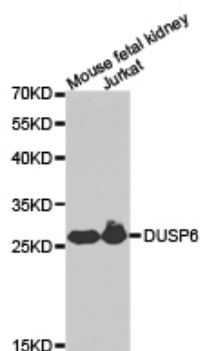
**Storage/Stability:** Store at -20oC or -80oC. Avoid freeze / thaw cycles. Buffer: PBS with 0.02% sodium azide, 50% glycerol, pH7.3.

**Synonyms:** HH19; MKP3; PYST1;**Immunogen:** Recombinant protein of human DUSP6**Purification:** Affinity purification**Reactivity:** H M R**Applications:** WB IHC**Molecular Weight:** 27kDa**Swiss-Prot No. :** Q16828**Gene ID:** 1848

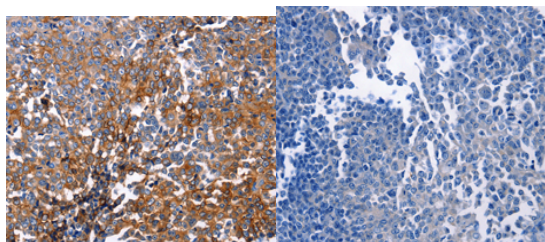
**For Research Use Only**

WB 1:500 - 1:2000

IHC 1:50- 1:100



Western blot analysis of extracts of various celllines,  
using DUSP6antibody.



Immunohistochemistry of paraffin-embedded human  
ovarian cancer tissue using DUSP6antibody.

**For Research Use Only**