



## TUBA4A Polyclonal Antibody

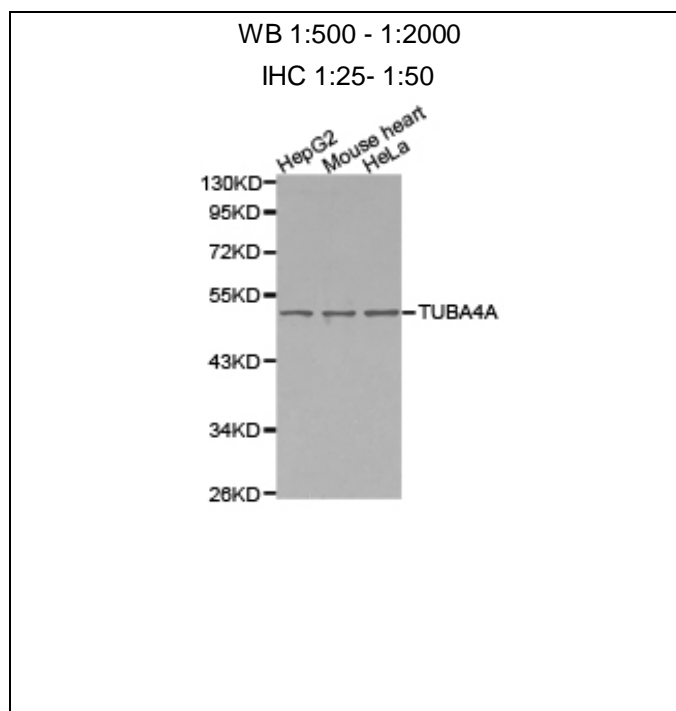
E93187

**Catalog Number:** E93187**Amount:** 100ul

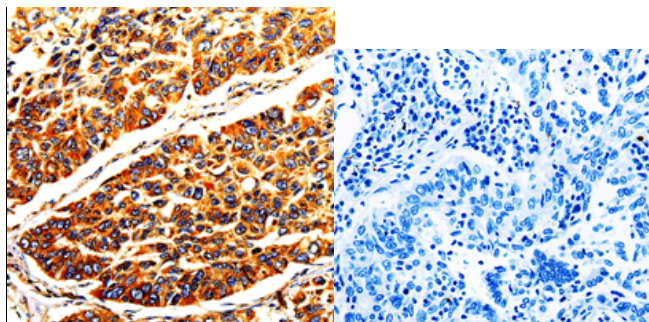
**Background:** Microtubules of the eukaryotic cytoskeleton perform essential and diverse functions and are composed of a heterodimer of alpha and beta tubulin. The genes encoding these microtubule constituents are part of the tubulin superfamily, which is composed of six distinct families. Genes from the alpha, beta and gamma tubulin families are found in all eukaryotes. The alpha and beta tubulins represent the major components of microtubules, while gamma tubulin plays a critical role in the nucleation of microtubule assembly. There are multiple alpha and beta tubulin genes and they are highly conserved among and between species. This gene encodes an alpha tubulin that is a highly conserved homolog of a rat testis-specific alpha tubulin.

**Species:** Rabbit**Isotype:** IgG

**Storage/Stability:** Store at -20oC or -80oC. Avoid freeze / thaw cycles. Buffer: PBS with 0.02% sodium azide, 50% glycerol, pH7.3.

**Synonyms:** TUBA1; H2-ALPHA**Immunogen:** A synthetic peptide of human TUBA4A**Purification:** Affinity purification**Reactivity:** H M R**Applications:** WB IHC**Molecular Weight:** 50kDa**Swiss-Prot No. :** P68366**Gene ID:** 7277**For Research Use Only**

Western blot analysis of extracts of various cell lines, using TUBA4Antibody.



Immunohistochemistry of paraffin-embedded human lung cancer tissue using TUBA4Antibody.