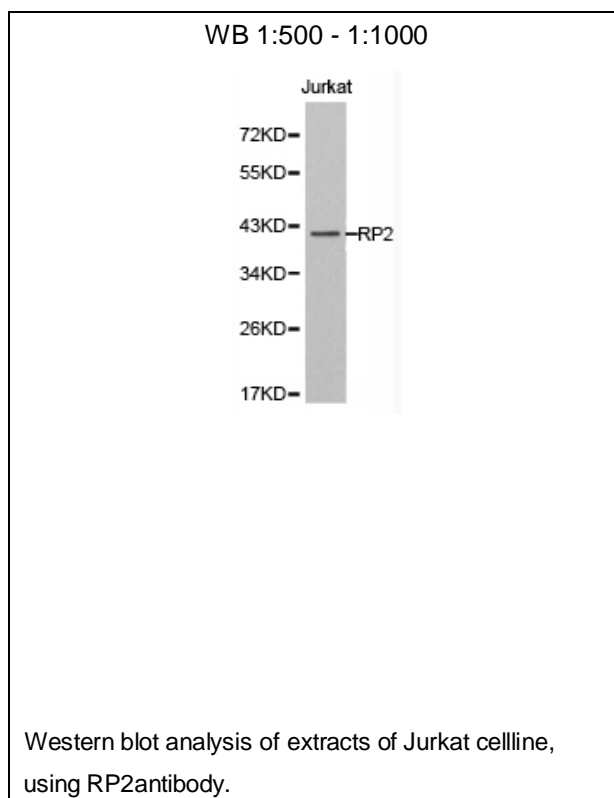




RP2 Polyclonal Antibody

E93212

- Catalog Number:** E93212
Amount: 100ul
Background: The RP2 locus has been implicated as one cause of X-linked retinitis pigmentosa. The predicted gene product shows homology with human cofactor C, a protein involved in the ultimate step of beta-tubulin folding. Progressive retinal degeneration may therefore be due to the accumulation of incorrectly-folded photoreceptor or neuron-specific tubulin isoforms followed by progressive cell death [provided by RefSeq, Jul 2008]
Species: Rabbit
Isotype: IgG
Storage/Stability: Store at -20oC or -80oC. Avoid freeze / thaw cycles. Buffer: PBS with 0.02% sodium azide, 50% glycerol, pH7.3.
Synonyms: XRP2; NME10; TBCCD2; NM23-H10; DELXp11.3;
Immunogen: Recombinant protein of human RP2
Purification: Affinity purification
Reactivity: H M R
Applications: WB
Molecular Weight: 40kDa
Swiss-Prot No. : O75695
Gene ID: 6102



For Research Use Only