



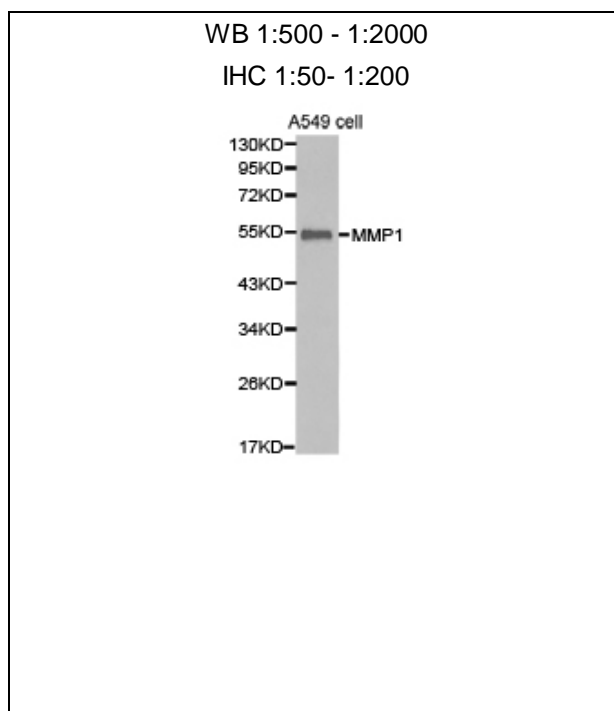
## MMP1 Polyclonal Antibody

**E95244****Catalog Number:** E95244**Amount:** 100ul

**Background:** MMP1, also named as CLG, belongs to the peptidase M10A family. MMP is the main enzyme that cleaves fibrillar collagen, namely types I, II, III, VII, and X. It is involved in cell migration and invasion, and is frequently up-regulated in cancer cells. It can be cleavage to two major forms (22 kDa and 27 kDa) by undergoing autolytic, and the minor form (25 kDa) is the glycosylated form of the 22 kDa form. The 27 kDa form has no activity while the 22/25 kDa form can act as activator for collagenase. The sizes of pro-MMP-1 and active MMP-1 from human synovial fibroblasts have been reported as 52 to 56 kDa, depending on glycosylation, and 41 to 45 kDa, respectively. In addition, a band of 62-kDa observed in the current study is pro-MMP-1 (PMID:9418730). This antibody is specific to MMP1

**Species:** Rabbit**Isotype:** IgG

**Storage/Stability:** Store at -20°C or -80°C. Avoid freeze / thaw cycles. Buffer: PBS with 0.02% sodium azide, 50% glycerol, pH7.3.

**Synonyms:** CLG; CLGN;**Immunogen:** Recombinant Protein of human MMP1**Purification:** Affinity purification**Reactivity:** H**Applications:** WB IHC**Molecular Weight:** 54kDa**Swiss-Prot No. :** P03956**Gene ID:** 4312**For Research Use Only**

Western blot analysis of extracts of A549 cellline, using  
MMP1antibody.

**For Research Use Only**