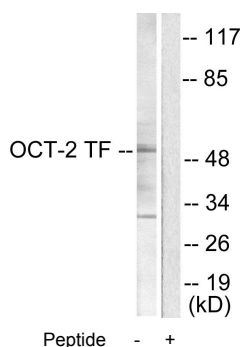




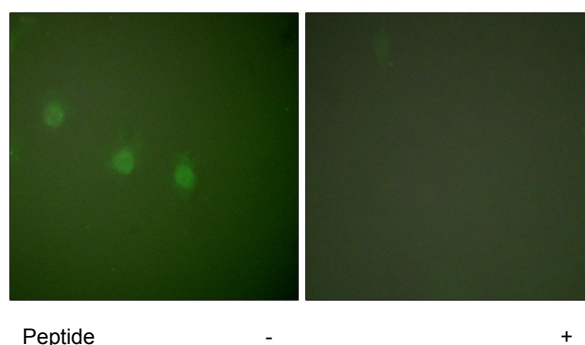
OCT2 Antibody

E11-0282C

Catalog Number:	E11-0282C
Amount:	100µg/100µl
Swiss-Prot No. :	P09086
All Names:	OCT2, OTF2, OCTAMER-BINDING TRANSCRIPTION FACTOR 2, OTF LYMPHOID-SPECIFIC 2
Form of Antibody:	Rabbit IgG in phosphate buffered saline (without Mg ²⁺ and Ca ²⁺), pH 7.4, 150mM NaCl, 0.02% sodium azide and 50% glycerol.
Storage/Stability:	Store at -20°C/1 year
Immunogen:	The antiserum was produced against synthesized peptide derived from human OCT2 antibody.
Purification:	The antibody was affinity-purified from rabbit antiserum by affinity-chromatography using epitope-specific immunogen.
Specificity/Sensitivity	OCT2 antibody detects endogenous levels of total OCT2 protein.
Reactivity:	Human, Mouse, Rat
Applications:	WB: 1:500~1:1000 IF: 1:100~1:500 ELISA: 1:5000~1:10000
References:	Saleh A. Bakheet, Toxicol. Sci., Feb 2007; 95: 436 - 442. Michael Hagmann, Nucleic Acids Res., Feb 1995; 23: 4978 - 4985. C.Peter Verrijzer, Nucleic Acids Res., Dec 1992; 20: 6369 - 6375. Véronique Goffin, Nucleic Acids Res., Aug 2005; 33: 4285 - 4310.

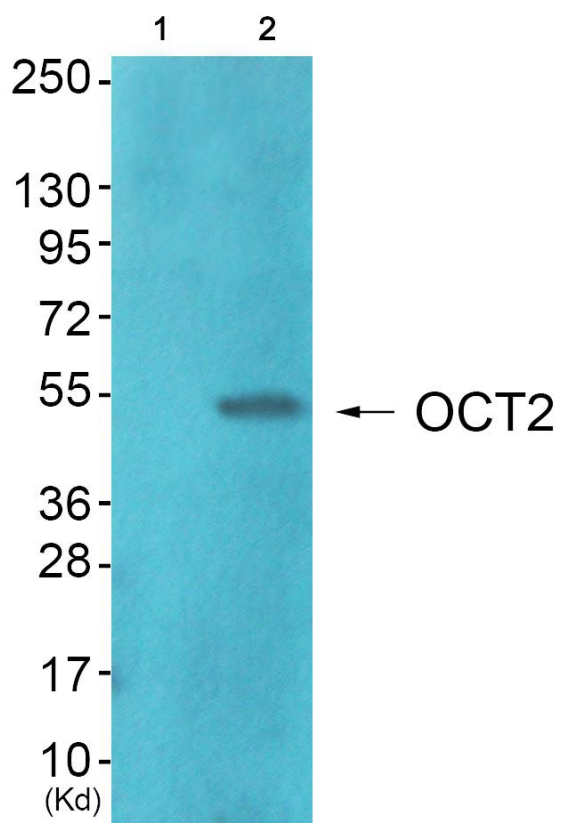


Western blot analysis of extracts from COS7 cells, using OCT2 antibody.



Immunofluorescence analysis of COS7 cells, using OCT2 antibody.

For Research Use Only



Western blot analysis using OCT2 Antibody. Line 1: Blocking peptide; Line 2: The extracts from JK cells.