



p300 Antibody

E11-0289C**Catalog Number:** E11-0289C**Concentration:** 1mg/ml**Swiss-Prot No.:** Q09472**Other Names:** E1A-associated protein p300, EP300, P300 transcription coactivator homolog**Storage/Stability:** Store at -20°C/1 year**Form of Antibody:** Rabbit IgG in phosphate buffered saline (without Mg²⁺ and Ca²⁺), pH 7.4, 150mM NaCl, 0.02% sodium azide and 50% glycerol.**Immunogen:** The antiserum was produced against synthesized peptide derived from N-terminal of human p300.**Purification:** The antibody was affinity-purified from rabbit antiserum by affinity-chromatography using

epitope-specific immunogen.

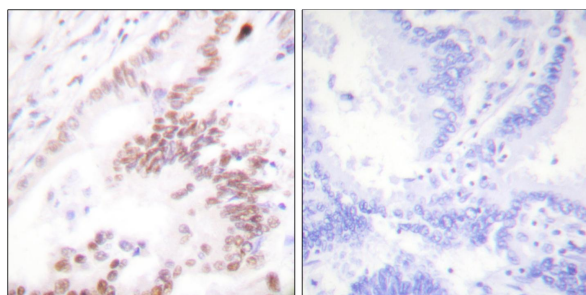
Specificity: p300 antibody detects endogenous levels of total p300 protein.**Reactivity:** Human**Applications:** WB: 1:500~1:1000 IHC: 1:50~1:100
ELISA: 1:10000**References:**

Wuchao Yuan, J. Biol. Chem., Apr 1996; 271: 9009.

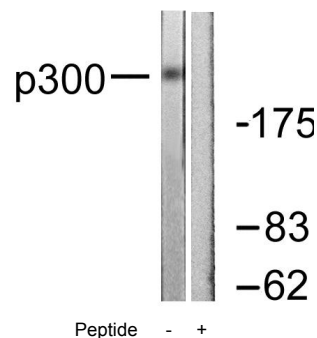
E. Tory Manning, Mol. Cell. Biol., Jun 2001; 21: 3876 - 3887.

Jiwen Li, Mol. Cell. Biol., Mar 2000; 20: 2031 - 2042.

Gopalswamy Jayaraman, J. Biol. Chem., Jun 1999; 274: 17342.



Immunohistochemistry analysis of paraffin-embedded human lung carcinoma tissue using p300 antibody.



Western blot analysis of extracts from MDA-MB-435 cells, using p300 antibody.

For Research Use Only

