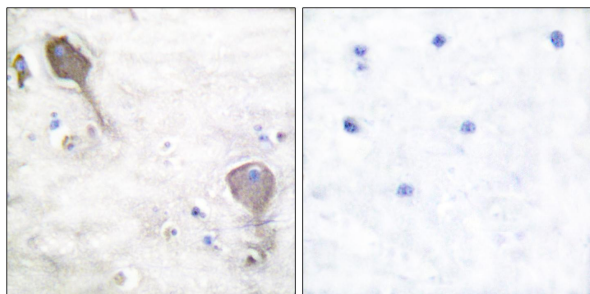




Parkin Antibody

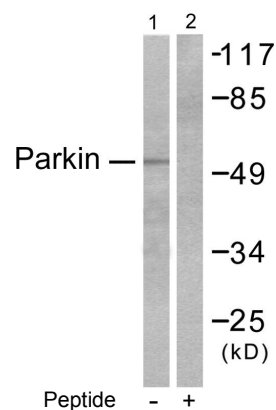
E11-0294C

- Catalog Number:** E11-0294C
Amount: 100µg/100µl
Swiss-Prot No. : O60260
All Names: PARK2, PRKN, PRKN2, Parkinson disease protein 2, Parkinson juvenile disease protein 2, ubiquitin E3 ligase PRKN
Form of Antibody: Rabbit IgG in phosphate buffered saline (without Mg²⁺ and Ca²⁺), pH 7.4, 150mM NaCl, 0.02% sodium azide and 50% glycerol.
Storage/Stability: Store at -20°C/1 year
Immunogen: The antiserum was produced against synthesized peptide derived from human Parkin antibody.
Purification: The antibody was affinity-purified from rabbit antiserum by affinity-chromatography using epitope-specific immunogen.
Specificity/Sensitivity Parkin antibody detects endogenous levels of total Parkin protein.
Reactivity: Human, Mouse, Rat
Applications: WB: 1:500~1:1000 IHC: 1:50~1:100
ELISA: 1:5000~1:10000
References: Fang Yang, J. Biol. Chem., Apr 2005; 280: 17154 - 17162.
Yukiko Kuroda, Hum. Mol. Genet., Mar 2006; 15: 883 - 895.
Iris H. Henn, J. Neurosci., Feb 2007; 27: 1868 - 1878.
Monica Joch, Mol. Biol. Cell, Jun 2007; 10.1091/mbc.E05-11-1027.



Peptide - +

Immunohistochemical analysis of paraffin-embedded human brain tissue using Parkin antibody.



Peptide - +

Western blot analysis of extracts from Jukat cells, using Parkin antibody.

For Research Use Only

