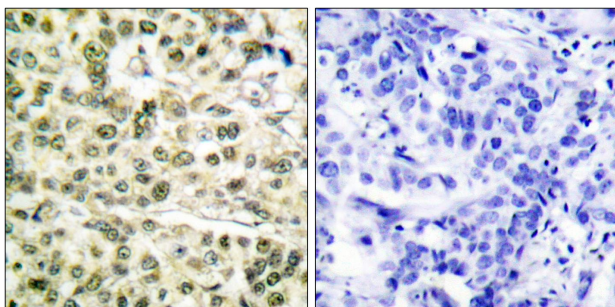




## PCNA Antibody

**E11-0298C**

- Catalog Number:** E11-0298C  
**Amount:** 100µg/100µl  
**Swiss-Prot No. :** P12004  
**All Names:** cyclin, proliferating cell nuclear antigen  
**Form of Antibody:** Rabbit IgG in phosphate buffered saline (without Mg<sup>2+</sup> and Ca<sup>2+</sup>), pH 7.4, 150mM NaCl, 0.02% sodium azide and 50% glycerol.  
**Storage/Stability:** Store at -20°C/1 year  
**Immunogen:** The antiserum was produced against synthesized peptide derived from human PCNA.  
**Purification:** The antibody was affinity-purified from rabbit antiserum by affinity-chromatography using epitope-specific immunogen.  
**Specificity/Sensitivity** PCNA antibody detects endogenous levels of total PCNA protein.  
**Reactivity:** Human, Mouse, Rat  
**Applications:** WB: 1:500~1:1000      IHC: 1:50~1:100  
ELISA: 1:5000~1:10000  
**References:** Anje Sporbert, Nucleic Acids Res., Jun 2005; 33: 3521 - 3528.  
Sean C. Gehen, Am J Physiol Lung Cell Mol Physiol, Mar 2007; 292: L716 - L724.  
Basavaraj Bagewadi, J. Virol., Nov 2004; 78: 11890 - 11903.  
T Iida, I Suetake, Genes Cells, Oct 2002; 7: 997 - 1007.

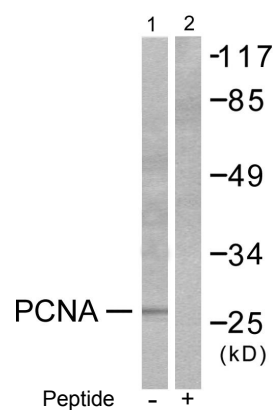


Peptide

-

+

Immunohistochemical analysis of paraffin-embedded human breast carcinoma tissue using PCNA antibody.



PCNA —

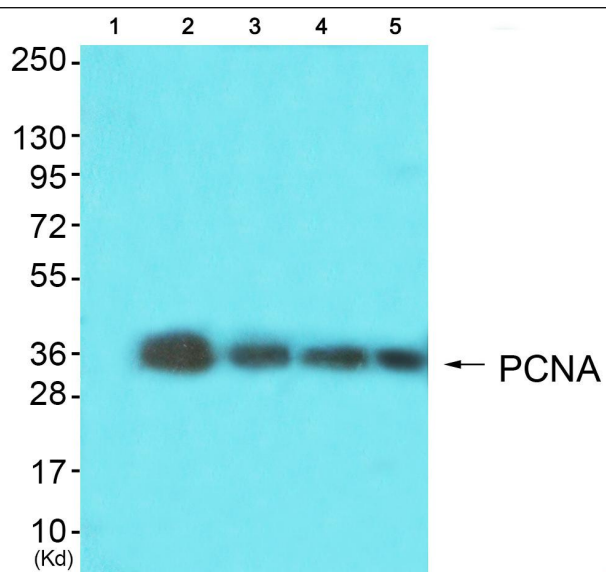
Peptide

-

+

Western blot analysis of extracts from HepG2 cells, using PCNA antibody.

**For Research Use Only**



Western blot analysis using PCNA Antibody. Line 1: Blocking peptide; Line 2: The extracts from HELA cells ; Line 3: The extracts from COLO cells. Line 4: The extracts from HepG2 cells. Line 5: The extracts from 293 cells.