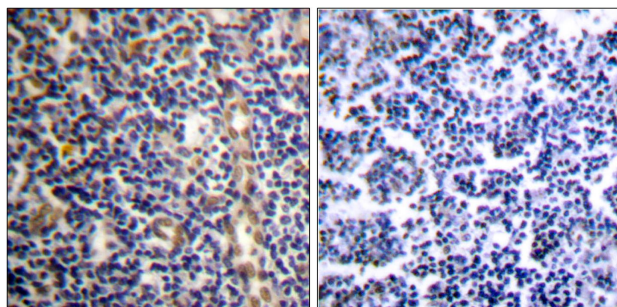




PML Antibody

E11-0305C

- Catalog Number:** E11-0305C
Amount: 100µg/100µl
Swiss-Prot No. : P29590
All Names: MYL, Probable transcription factor PML, TRIM19, Tripartite motif protein 19
Form of Antibody: Rabbit IgG in phosphate buffered saline (without Mg²⁺ and Ca²⁺), pH 7.4, 150mM NaCl, 0.02% sodium azide and 50% glycerol.
Storage/Stability: Store at -20°C/1 year
Immunogen: The antiserum was produced against synthesized peptide derived from human PML.
Purification: The antibody was affinity-purified from rabbit antiserum by affinity-chromatography using epitope-specific immunogen.
Specificity/Sensitivity PML antibody detects endogenous levels of total PML protein.
Reactivity: Human
Applications: WB: 1:500~1:1000 IHC: 1:50~1:100
IF: 1:100~1:500 ELISA: 1:10000
References: Hitoshi Yoshida, Mol. Cell. Biol., Jun 2007; 10.1128.
Z M Mu, Mol. Cell. Biol., Oct 1994; 14: 6858 - 6867.
Alexander M. Ishov, J. Cell Biol., Oct 1999; 147: 221.
Zhi-Xiang Xu, Mol. Cell. Biol., Jun 2003; 23: 4247 - 4256.

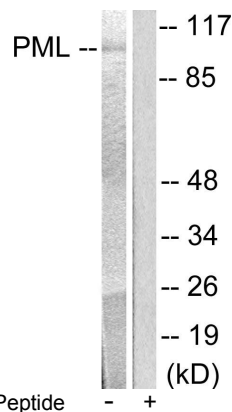


Peptide

-

+

Immunohistochemical analysis of paraffin-embedded human tonsil tissue using PML antibody.



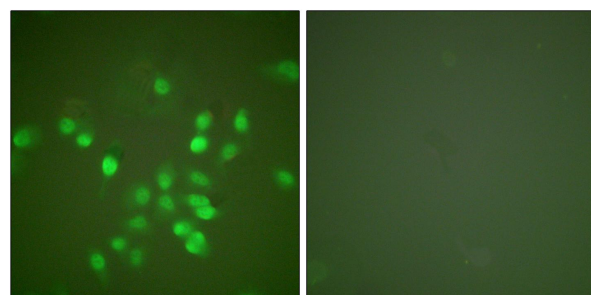
Peptide

-

+

Western blot analysis of extracts from A549 cells, using PML antibody.

For Research Use Only

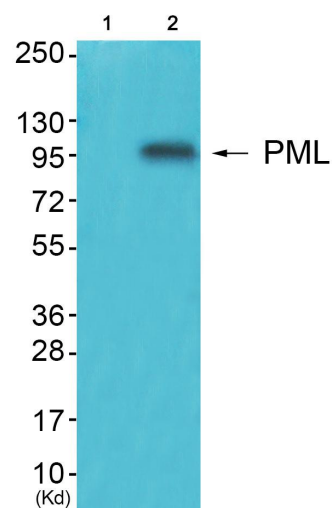


Peptide

-

+

Immunofluorescence analysis of A549 cells, using PML antibody.



Western blot analysis using PML Antibody.
Line 1: Blocking peptide; Line 2: The extracts from JK cells.