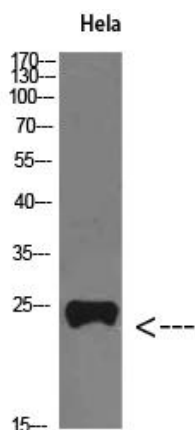


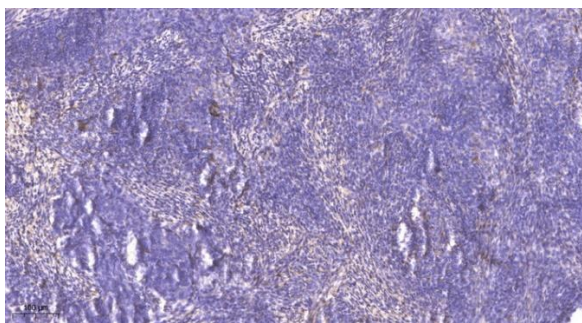


PTH-rP Polyclonal Antibody

E11-2035790

Catalog Number: E11-2035790**Amount:** 100ug/100ul**Antibody type:** PTH-rP**Applications:** WB 1:500-2000, ELISA 1: 10000-20000**Reactivity:** H**Molecular Weight:** 25**Immunogen:** Synthesized peptide derived from PTH-rP at AA range: 101-150**Gene ID:** 5744**Swiss-Prot No.:** [P12272](#)**Altername:** PTHLH**Source:** Rabbit**Purification:** The antibody was affinity-purified from rabbit antiserum by affinity-chromatography using epitope-specific immunogen.**Storage/Stability:** Liquid in PBS containing 50% glycerol, 0.5% BSA and 0.02% sodium azide.**Shipping&Stability:** -20°C/1 year

Western Blot analysis of HeLa cells using PTH-rP Polyclonal Antibody diluted at 1:800. Secondary antibody was diluted at 1:20000.



Immunohistochemical analysis of paraffin-embedded human cervical carcinoma. 1, Antibody was diluted at 1:200 (4° overnight). 2, Tris-EDTA, pH9.0 was used for antigen retrieval. 3, Secondary antibody was diluted at 1:200 (room temperature, 45min).

For Research Use Only