

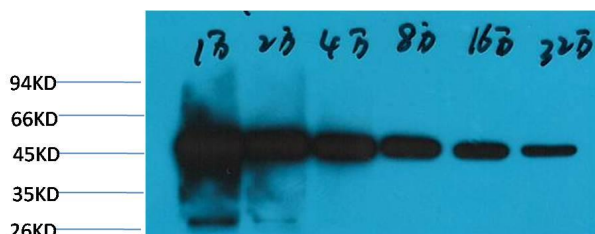


β -tubulin Mouse Monoclonal Antibody(5G3) -HRP Conjugated

E12-326

Catalog Number: E12-326**Amount:** 100 μ g/100 μ l**Isotype:** IgG1**Clone Number:** 5G3**Alternative Names:** Beta 4 tubulin, TBB5, TUBB2, TUBB2A, tubulin beta 2A, beta tubulin, tubulin beta chain

Background: Microtubules are constituent parts of the mitotic apparatus, cilia, flagella, and elements of the cytoskeleton. They consist principally of 2 soluble proteins, alpha- and beta-tubulin, each of about 55,000 Da. Antibodies against beta Tubulin are useful as loading controls for Western Blotting. However it should be noted that levels of β -Tubulin may not be stable in certain cells. For example, expression of β -Tubulin in adipose tissue is very low and therefore β -Tubulin should not be used as loading control for these tissues.

Form of Antibody: PBS, pH 7.4, 50% Glycerol.**Storage/Stability:** Store at -20° C/1 year. Do not aliquot the antibody.**Specificity/Sensitivity:** The β -tubulin antibody can detect endogenous β -tubulin protein.**Reactivity:** H, R, M, Mk, Dg, C, Hm, Rb, ShInsect, Yeast**Applications:** WB: 1:20,000-640,000 IHC: 1:1,000-2,000**Molecular Weight:** 55KD

Western blot analysis of HeLa, with β -tubulin-HRP Conjugated E12-326 diluted at 1:10,000, 20,000, 40,000, 80,000, 160,000, 320,000.

For Research Use Only