



TLR1 Rabbit Polyclonal Antibody

E12-364

Catalog Number: E12-364

Amount: 100 μ g/100 μ l

Isotype: IgG

Alternative Names: CD281 antibody, Toll like receptor 1 antibody, KIAA0012 antibody, LPRS5 antibody

Background: TLR 1 is a member of the Toll-like receptor family (TLR) of pattern recognition receptors of the innate immune system. TLR1 recognizes pathogen-associated molecular pattern with a specificity for gram-positive bacteria. TLR1 has also been designated as CD281.

Form of Antibody: PBS, pH 7.4, containing 0.02% sodium azide as Preservative and 50% Glycerol.

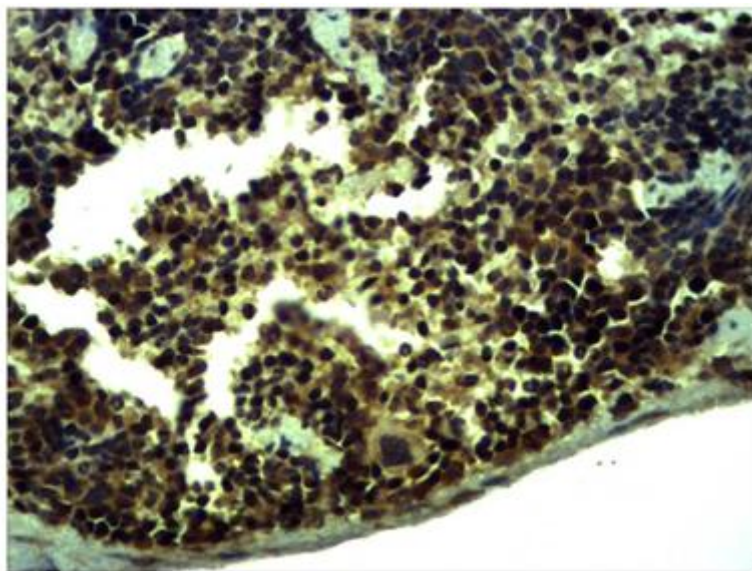
Storage/Stability: Antigen Affinity Purified IgG in PBS, pH 7.4, containing 0.02% sodium azide as Preservative and 50% Glycerol. Store at -20°C. Do not aliquot the antibody.

Specificity/Sensitivity: Antibody can detect endogenous TLR1 protein.

Reactivity: H, R, M

Applications: IHC: 1:200-500

Molecular Weight: N/A



Immunohistochemical analysis of paraffin-embedded Mouse Spleen Tissue using TLR1 (E12-364)
Rabbit pAb diluted at 1:500.

For Research Use Only