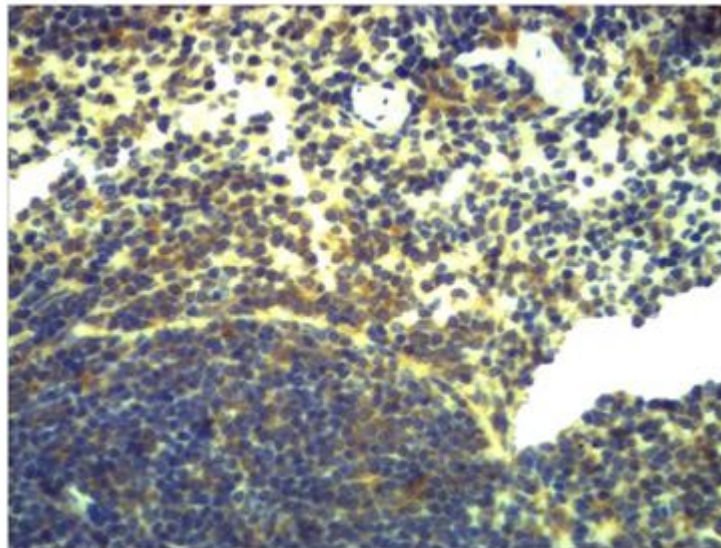




## TLR2 Rabbit Polyclonal Antibody

E12-367

- Catalog Number:** E12-367
- Amount:** 100  $\mu$ g/100  $\mu$ l
- Isotype:** IgG
- Alternative Names:** CD282 antibody, TIL4 antibody, Toll like receptor antibody
- Background:** Toll-like receptor 2 also known as TLR2 is a protein that in humans is encoded by the TLR2 gene. TLR2 has also been designated as CD282. TLR2 is one of the toll-like receptors and plays a role in the immune system.
- Form of Antibody:** PBS, pH 7.4, containing 0.02% sodium azide as Preservative and 50% Glycerol.
- Storage/Stability:** Antigen Affinity Purified IgG in PBS, pH 7.4, containing 0.02% sodium azide as Preservative and 50% Glycerol. Store at -20°C. Do not aliquot the antibody.
- Specificity/Sensitivity:** Antibody can detect endogenous TLR2 protein.
- Reactivity:** H, R, M
- Applications:** IHC: 1:200-500
- Molecular Weight:** N/A



Immunohistochemical analysis of paraffin-embedded Mouse Spleen Tissue using TLR2 (E12-367) Rabbit pAb diluted at 1:500.

**For Research Use Only**