



Smad2 Rabbit Polyclonal Antibody

E12-434**Catalog Number:** E12-434**Amount:** 100 μ g/100 μ l**Isotype:** IgG**Alternative Names:** hMAD2 antibody, JV18 antibody, MAD antibody, MADH2 antibody, MGC22139 antibody

Background: SMAD2 is a protein that in humans is encoded by the SMAD2 gene. SMAD proteins are signal transducers and transcriptional modulators that mediate multiple signaling pathways. SMAD2 mediates the signal of the transforming growth factor (TGF)-beta, and thus regulates multiple cellular processes, such as cell proliferation, apoptosis, and differentiation. This protein is recruited to the TGF-beta receptors through its interaction with the SMAD anchor for receptor activation (SARA) protein.

Form of Antibody: PBS, pH 7.4, containing 0.02% sodium azide as Preservative and 50% Glycerol.

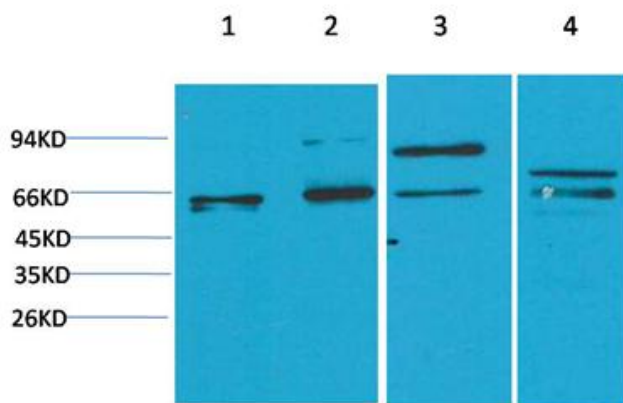
Storage/Stability: Store at -20° C/1 year. Do not aliquot the antibody.

Specificity/Sensitivity: Antibody can detect endogenous Smad2 protein.

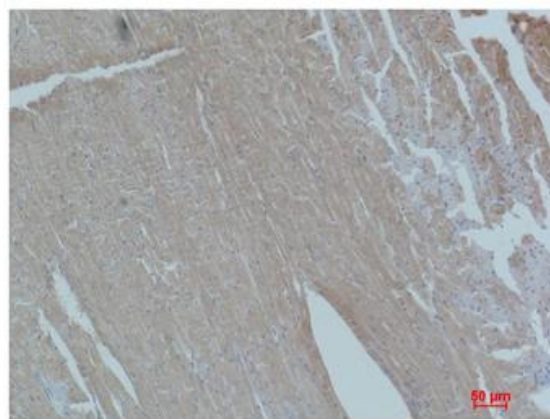
Reactivity: H, R, M

Applications: WB: 1:1,000-2,000 IHC: 1:100-200

Molecular Weight: 60KD



Western blot analysis of 1) Hela, 2) Jurkat, 3) C2C12, 4) PC12 with Smad2 Rabbit pAb E12-434 diluted at 1:2,000.



Immunohistochemical analysis of paraffin-embedded Mouse Heart Tissue using Smad2 (E12-434) Rabbit pAb diluted at 1:200.

For Research Use Only