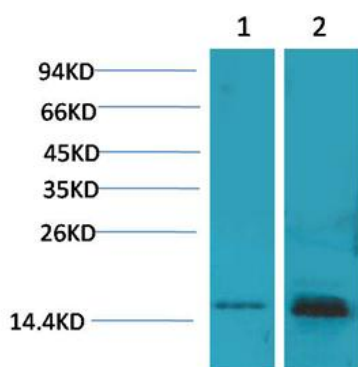
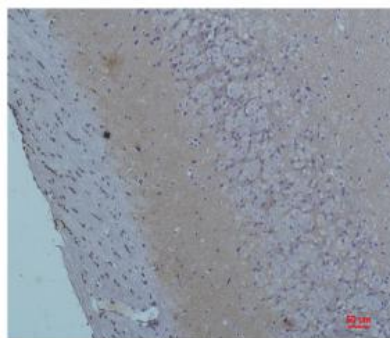




S100 Rabbit Polyclonal Antibody

E12-450**Catalog Number:** E12-450**Amount:** 100 μ g/100 μ l**Isotype:** IgG**Alternative Names:** Bpb antibody, NEF antibody, protein S100-A1 antibody**Background:** The S100 proteins are a family of low-molecular-weight proteins found in vertebrates and characterized by two calcium-binding sites that have helix-loop-helix ("EF-hand type") conformation.**Form of Antibody:** PBS, pH 7.4, containing 0.02% sodium azide as Preservative and 50% Glycerol.**Storage/Stability:** Store at -20° C/1 year. Do not aliquot the antibody.**Specificity/Sensitivity:** Antibody can detect endogenous S100 protein.**Reactivity:** H, R, M**Applications:** WB: 1:1,000-2,000 IHC: 1:100-200**Molecular Weight:** ~15KD

Western blot analysis of 1) 293T, 2) Mouse Brain Tissue with S100 Rabbit pAb E12-450 diluted at 1:2,000.



Immunohistochemical analysis of paraffin-embedded Rat Brain Tissue using S100 (E12-450) Rabbit pAb diluted at 1:200.

For Research Use Only