



S100 β Rabbit Polyclonal Antibody

E12-451

Catalog Number: E12-451

Amount: 100 μ g/100 μ l

Isotype: IgG

Alternative Names: Protein S100-B antibody, S 100 calcium binding protein beta chain antibody, S100B antibody

Background: Despite their relatively small size (8-12 kDa) and uncomplicated architecture, S100 proteins regulate a variety of cellular processes such as cell growth and motility, cell cycle progression, transcription, and differentiation.

Form of Antibody: PBS, pH 7.4, containing 0.02% sodium azide as Preservative and 50% Glycerol.

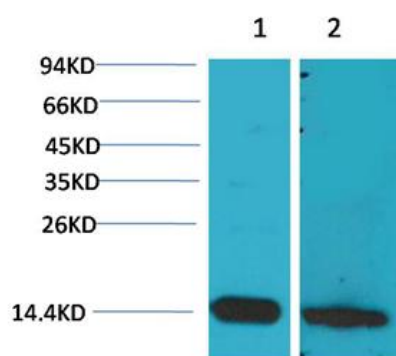
Storage/Stability: Store at -20° C/1 year. Do not aliquot the antibody.

Specificity/Sensitivity: Antibody can detect endogenous S100 β protein.

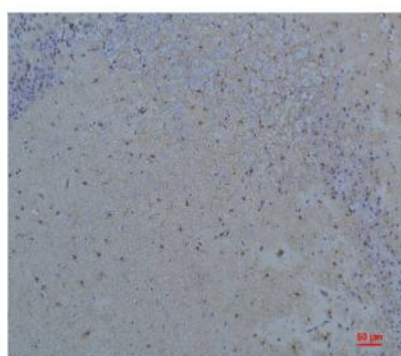
Reactivity: H, R, M

Applications: WB: 1:1,000-2,000 IHC:1:100-200

Molecular Weight: 11KD



Western blot analysis of 1) Mouse Brain Tissue, 2) Rat Brain Tissue with S100 β Rabbit pAb E12-451 diluted at 1:2,000.



Immunohistochemical analysis of paraffin-embedded Rat Brain Tissue using S100 β (E12-451) Rabbit pAb diluted at 1:200.

For Research Use Only