



Mouse anti-Human CD4/CD8, FITC/PE Conjugated mAb

E16HD003

<u>Catalog No.</u>	<u>Size</u>
E16HD003-050	50 Tests
E16HD003-020	20 Tests

Product Details:

Storage Condition:	Store at 4°C. DO NOT FREEZE. LIGHT SENSITIVE MATERIAL.
Reactivity:	Human, Not yet tested in other species.
Vol.per.Test:	20µl/Test
Storage Buffer:	Phosphate-buffered solution, pH 7.4, containing 0.09% sodium azide and 0.2% (w/v) BSA
Applications:	FCM IF

Antibody information:

Specificity:	hCD4	hCD8
Format:	FITC	PE
Clone:	4AOKT4	4ARiv11
Isotype:	Mouse IgG2b	Mouse IgG1

Experimental Methods:

1. Take 100µl peripheral blood anticoagulated by EDTA and add to the bottom of 5ml tube;
2. Add 20µl labeled antibody to the bottom of flow tube mixing with the whole blood, incubate for 20 minutes at room temperature away from light;
3. Add 2 ml 1×RBC lysis buffer, incubate for 10 minutes away from light after mixing, dissolve red blood cells (recommended: RBC lysing Solution 10×, Cat.: FXP001);
4. Sample tube is set to 1000 rpm centrifugation for 5 minutes, discard the supernatant;
5. Add 2 ml PBS wash buffer to resuspend the cells, then 1000 rpm centrifugation for 5 minutes, discard the supernatant;
6. Add 0.5 ml PBS wash buffer to resuspend the cells and detect by flow cytometry (sample should be determined on the day on the machine and can also be added fixation overnight at 4 °C then measured).

[PBS wash buffer: PBS +1% FBS +0.1% NaN₃; Cat.: E16XP005]

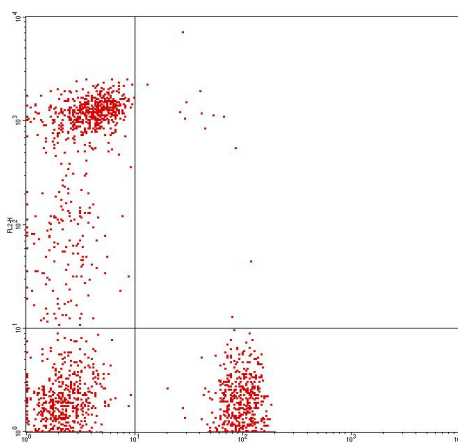
[Cell fixation: 2% formaldehyde solution]

Notices:

For Research Use Only

1. This reagent has been pre-diluted for use at the recommended Volume per Test.
We typically use 1×10^6 cells in a 100 μ l experimental sample (a test);
2. Since applications vary, each investigator should titrate the reagent to obtain optimal results.
3. **Caution:** Sodium azide yields highly toxic hydrazoic acid under acidic conditions. Dilute azide compounds in running water before discarding to avoid accumulation of potentially explosive deposits in plumbing;
4. If the sample can not be timely analysis, please fixed;
5. **For research use only, not for diagnostic or therapeutic use.**

Profile of peripheral blood lymphocytes analyzed by flow cytometry



Human peripheral blood lymphocytes analyzed with Mouse Anti-Human CD4/CD8, FITC/PE

Related products:

Catalog No.	Product name	Applications	
E16HD001	Mouse anti-Human CD3/CD4, FITC/PE Conjugated mAb.	FCM	IF
E16HD002	Mouse anti-Human CD3/CD8, FITC/PE Conjugated mAb	FCM	IF
E16HD004	Mouse anti-Human CD3/CD19, FITC/PE Conjugated mAb.	FCM	IF

For Research Use Only