



## Mouse anti-Human CD8, FITC Conjugated mAb

**E16HF008**

<b><u>Catalog No.</u></b>	<b><u>Size</u></b>
E16HF008-100	100 Tests
E16HF008-050	50 Tests

### **Description:**

4ARiv11 reacts with the 32 kDa  $\alpha$  chain of CD8. This molecule is expressed on the T suppressor/cytotoxic cell population (which comprises about 1/3 of the peripheral blood T lymphocytes total population) and with most of thymocytes, as well as a subset of NK cells. CD8 expresses as either a heterodimer with the CD8b chain (CD8ab) or as a homodimer (CD8aa or CD8bb). CD8 acts as a co-receptor with MHC Class I restricted TCRs in antigen recognition. CD8 function is important for positive selection of MHC Class I restricted CD8<sup>+</sup> T cells during T cell development.\* Ratio of CD4 and CD8 is important for monitor of HIV infection.

<b>Storage Condition:</b>	Store at 4°C.DO NOT FREEZE. LIGHT SENSITIVE MATERIAL.
<b>Clone:</b>	Riv11
<b>Isotype:</b>	Mouse IgG1
<b>Reactivity:</b>	Human,Not yet tested in other species.
<b>Vol.per.Test:</b>	10 $\mu$ l/Test
<b>Storage Buffer:</b>	Phosphate-buffered solution, pH 7.4, containing 0.09% sodium azide and 0.2% (w/v) BSA
<b>Applications:</b>	FC ICC IHC

### **Experimental Methods:**

1. Take 100 $\mu$ l peripheral blood anticoagulated by EDTA and add to the bottom of 5ml tube;
2. Add 10 $\mu$ l labeled antibody to the bottom of flow tube mixing with the whole blood, incubate for 20 minutes at room temperature away from light;
3. Add 2 ml 1 $\times$ RBC lysis buffer, incubate for 10 minutes away from light after mixing, dissolve red blood cells (recommended: RBC lysing Solution 10 $\times$ , Cat.: E16XP001);
4. Sample tube is set to 1000 rpm centrifugation for 5 minutes, discard the supernatant;
5. Add 2 ml PBS wash buffer to resuspend the cells, then 1000 rpm centrifugation for 5 minutes, discard the supernatant;
6. Add 0.5 ml PBS wash buffer to resuspend the cells and detect by flow cytometry (sample should be determined on the day on the machine and can also be added fixation overnight at 4 °C then measured).

[PBS wash buffer: PBS +1% FBS +0.1% NaN<sub>3</sub>; Cat.: E16XP005]

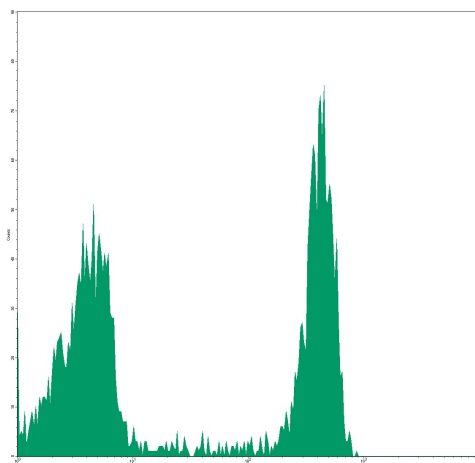
[Cell fixation: 2% formaldehyde solution]

### **Notices:**

**For Research Use Only**

1. This reagent has been pre-diluted for use at the recommended Volume per Test.  
We typically use  $1 \times 10^6$  cells in a 100 $\mu$ l experimental sample (a test);
2. Since applications vary, each investigator should titrate the reagent to obtain optimal results.
3. **Caution:** Sodium azide yields highly toxic hydrazoic acid under acidic conditions. Dilute azide compounds in running water before discarding to avoid accumulation of potentially explosive deposits in plumbing;
4. If the sample can not be timely analysis, please fixed;
5. **For research use only, not for diagnostic or therapeutic use.**

#### Profile of peripheral blood lymphocytes analyzed by flow cytometry



Human peripheral blood lymphocytes analyzed with FITC CD8 mAb

#### References

1. Engleman EG et al. (1981) J Exp Med 153: 193-198.
2. Haynes, B et al. (1986) Leukocyte Typing II: Human T lymphocytes. New York: Springer-Verlag; 3-30.
3. Parnes, JR. et al. (1989). Adv. Immunol. 44,256-311.
4. Bikah G. et al. (1996). Science 274:1906.

#### Related products:

Catalog No.	Product name	Applications
E16HU008	Mouse Anti-Human CD8, Purified mAb	FC ICC IHC
E16HP008	Mouse Anti-Human CD8, PE Conjugated mAb	FC ICC IHC
E16HC008	Mouse Anti-Human CD8, PE-Cy5 Conjugated mAb	FC ICC IHC
E16HA008	Mouse Anti-Human CD8, APC Conjugated mAb	FC ICC IHC
E16HB008	Mouse Anti-Human CD8, Biotin Conjugated mAb	FC ICC IHC

**For Research Use Only**