



Mouse anti-Human CD11a, FITC Conjugated mAb.

E16HF011a

<u>Catalog No.</u>	<u>Size</u>
E16HF011a-100	100 Tests
E16HF011a-050	50 Tests

Description:

4ATS1/22.1.1.13 reacts with CD11a, a 180 kDa molecule. CD11a is the a chain of the leukocyte function associated antigen-1 (LFA-1a), and is expressed on all leukocytes including T and B cells, monocytes, and granulocytes, but is absent on non-hematopoietic tissue and human platelets. CD11/CD18 (LFA-1), a member of the integrin subfamily, is a leukocyte adhesion receptor that is essential for cell-to-cell contact, such as lymphocyte adhesion, NK and T-cell cytotoxicity, and T-cell proliferation. CD11/CD18 is also involved in the interaction of leukocytes with endothelium.

*CD11a antibody has been used to reduce graft failure for bone marrow grafts in immunodeficient children. This clone is cross reactive with non-human primate.

Storage Condition:	Store at 4°C. DO NOT FREEZE. LIGHT SENSITIVE MATERIAL.
Clone:	TS1/22.1.1.13
Isotype:	Mouse IgG1
Reactivity:	Human, Not yet tested in other species.
Vol.per.Test:	10µl/Test
Storage Buffer:	Phosphate-buffered solution, pH 7.4, containing 0.09% sodium azide and 0.2% (w/v) BSA
Applications:	FCM IF

Experimental Methods:

1. Take 100µl peripheral blood anticoagulated by EDTA and add to the bottom of 5ml tube;
2. Add 10µl labeled antibody to the bottom of flow tube mixing with the whole blood, incubate for 20 minutes at room temperature away from light;
3. Add 2 ml 1×RBC lysis buffer, incubate for 10 minutes away from light after mixing, dissolve red blood cells (recommended: RBC lysing Solution 10×, Cat.: E16XP001);
4. Sample tube is set to 1000 rpm centrifugation for 5 minutes, discard the supernatant;
5. Add 2 ml PBS wash buffer to resuspend the cells, then 1000 rpm centrifugation for 5 minutes, discard the supernatant;
6. Add 0.5 ml PBS wash buffer to resuspend the cells and detect by flow cytometry (sample should be determined on the day on the machine and can also be added fixation overnight at 4 °C then measured).

[PBS wash buffer: PBS +1% FBS +0.1% NaN₃; Cat.: E16XP005]

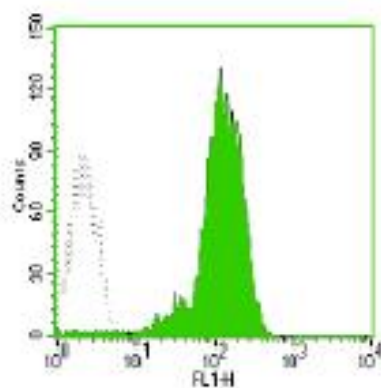
[Cell fixation: 2% formaldehyde solution]

Notices:

For Research Use Only

1. This reagent has been pre-diluted for use at the recommended Volume per Test.
We typically use 1×10^6 cells in a 100 μ l experimental sample (a test);
2. Since applications vary, each investigator should titrate the reagent to obtain optimal results.
3. **Caution:** Sodium azide yields highly toxic hydrazoic acid under acidic conditions. Dilute azide compounds in running water before discarding to avoid accumulation of potentially explosive deposits in plumbing;
4. If the sample can not be timely analysis, please fixed;
5. **For research use only, not for diagnostic or therapeutic use.**

Profile of peripheral blood granulocytes analyzed by flow cytometry



Human peripheral blood granulocytes analyzed with FITC CD11a mAb

References

1. Schlossman. S et al. (1995) Leucocyte Typing V: White Cell Differentiation Antigens. Oxford University Press. New York.
2. Lub M et al. (1995) Immunol. Today 16:479.
3. Sanchez-Mateos P et al. (1996) Cancer Biol. 7:99.

Related products:

Catalog No.	Product name	Applications
E16HU011a	Mouse Anti-Human CD11a, Purified mAb	FCM IF
E16HP011a	Mouse Anti-Human CD11a, PE Conjugated mAb	FCM IF

For Research Use Only