



Mouse anti-Human CD18, FITC Conjugated mAb

E16HF0181

<u>Catalog No.</u>	<u>Size</u>
E16HF0181-100	100 Tests
E16HF0181-050	50 Tests

Description:

4ATS1/18.1.2.11 reacts with CD18, the 95 kDa beta chain component of leukocyte function associated antigen-1 (LFA-1). CD18 is expressed by all peripheral blood leukocytes. CD18 is a leukocyte adhesion receptor that is essential for cell-to-cell contact in many immune responses such as lymphocyte adhesion, NK and T cell cytolysis, and T cell proliferation.

Storage Condition:	Store at 4°C.DO NOT FREEZE. LIGHT SENSITIVE MATERIAL.
Clone:	4ATS1/18.1.2.11
Isotype:	Mouse IgG1
Reactivity:	Human,Not yet tested in other species.
Vol.per.Test:	10µl/Test
Storage Buffer:	Phosphate-buffered solution, pH 7.4, containing 0.09% sodium azide and 0.2% (w/v) BSA
Applications:	FCM IF

Experimental Methods:

1. Take 100µl peripheral blood anticoagulated by EDTA and add to the bottom of 5ml tube;
2. Add 10µl labeled antibody to the bottom of flow tube mixing with the whole blood, incubate for 20 minutes at room temperature away from light;
3. Add 2 ml 1×RBC lysis buffer, incubate for 10 minutes away from light after mixing, dissolve red blood cells (recommended: RBC lysing Solution 10×,Cat.: FXP001);
4. Sample tube is set to 1000 rpm centrifugation for 5 minutes, discard the supernatant;
5. Add 2 ml PBS wash buffer to resuspend the cells, then 1000 rpm centrifugation for 5 minutes, discard the supernatant;
6. Add 0.5 ml PBS wash buffer to resuspend the cells and detect by flow cytometry (sample should be determined on the day on the machine and can also be added fixation overnight at 4 °C then measured).

[PBS wash buffer: PBS +1% FBS +0.1% NaN₃; Cat.: FXP005]

[Cell fixation: 2% formaldehyde solution]

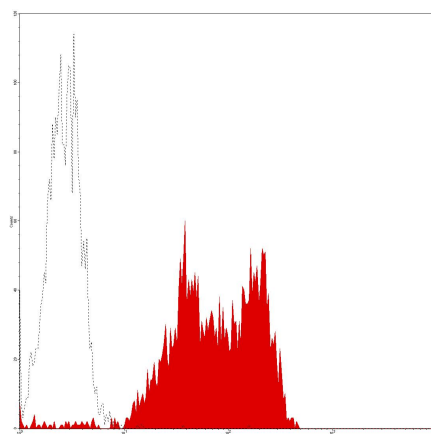
Notices:

1. This reagent has been pre-diluted for use at the recommended Volume per Test.
We typically use 1 X 10⁶ cells in a 100µl experimental sample (a test);

For Research Use Only

2. Since applications vary, each investigator should titrate the reagent to obtain optimal results.
3. **Caution:** Sodium azide yields highly toxic hydrazoic acid under acidic conditions. Dilute azide compounds in running water before discarding to avoid accumulation of potentially explosive deposits in plumbing;
4. If the sample can not be timely analysis, please fixed;
5. **For research use only, not for diagnostic or therapeutic use.**

Profile of peripheral blood lymphocytes analyzed by flow cytometry



Human peripheral blood lymphocytes analyzed with FITC CD18 mAb

References

1. McMichael AJ et al. (1995) Leucocyte Typing III: White Cell Differentiation Antigens. Oxford University Press. New York.
2. Krensky AM et al. (1983) J. Immunol. 131:611-616.
3. Dustin ML et al. (1989) Nature 341:619-624.

Related products:

Catalog No.	Product name	Applications
E16HU0181	Mouse Anti-Human CD18, Purified mAb	FCM IF
E16HP0181	Mouse Anti-Human CD18, PE Conjugated mAb	FCM IF

For Research Use Only