



Mouse anti-Human CD20, FITC Conjugated mAb

E16HF020

<u>Catalog No.</u>	<u>Size</u>
E16HF020-100	100 Tests
E16HF020-050	50 Tests

Description:

4ABCA/B20 reacts with human CD20 (B1), 37/35 kDa protein, which is expressed on pre-B cells and mature B cells but not on plasma cells. The CD20 antigen can also be detected at low levels on a subset of peripheral blood T-cells. CD20 regulates B-cell activation and proliferation by regulating transmembrane Ca^{++} conductance and cell-cycle progression.

This clone is cross reactive with non-human primate.

* CD20 antibody has been used for lymphoma diagnosis and therapy.

Storage Condition:	Store at 4°C. DO NOT FREEZE. LIGHT SENSITIVE MATERIAL.
Clone:	4ABCA/B20
Isotype:	Mouse IgG2a
Reactivity:	Human, Not yet tested in other species.
Vol.per.Test:	10µl/Test
Storage Buffer:	Phosphate-buffered solution, pH 7.4, containing 0.09% sodium azide and 0.2% (w/v) BSA
Applications:	FCM IF

Experimental Methods:

1. Take 100µl peripheral blood anticoagulated by EDTA and add to the bottom of 5ml tube;
2. Add 10µl labeled antibody to the bottom of flow tube mixing with the whole blood, incubate for 20 minutes at room temperature away from light;
3. Add 2 ml 1×RBC lysis buffer, incubate for 10 minutes away from light after mixing, dissolve red blood cells (recommended: RBC lysing Solution 10×, Cat.: FXP001);
4. Sample tube is set to 1000 rpm centrifugation for 5 minutes, discard the supernatant;
5. Add 2 ml PBS wash buffer to resuspend the cells, then 1000 rpm centrifugation for 5 minutes, discard the supernatant;
6. Add 0.5 ml PBS wash buffer to resuspend the cells and detect by flow cytometry (sample should be determined on the day on the machine and can also be added fixation overnight at 4 °C then measured).

[PBS wash buffer: PBS +1% FBS +0.1% NaN₃; Cat.: FXP005]

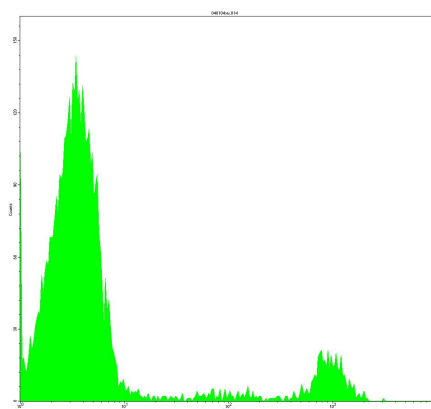
[Cell fixation: 2% formaldehyde solution]

Notices:

For Research Use Only

1. This reagent has been pre-diluted for use at the recommended Volume per Test.
We typically use 1×10^6 cells in a 100 μ l experimental sample (a test);
2. Since applications vary, each investigator should titrate the reagent to obtain optimal results.
3. **Caution:** Sodium azide yields highly toxic hydrazoic acid under acidic conditions. Dilute azide compounds in running water before discarding to avoid accumulation of potentially explosive deposits in plumbing;
4. If the sample can not be timely analysis, please fixed;
5. **For research use only, not for diagnostic or therapeutic use.**

Profile of peripheral blood lymphocytes analyzed by flow cytometry



Human peripheral blood lymphocytes analyzed with FITC CD20 mAb

References

1. Ling NR et al., eds. (1987) Leucocyte Typing III: White Cell Differentiation Antigens, Oxford University Press, New York. 303-334
2. Hultin LE et al., (1993) Cytometry 14:196-204.
3. Deans JP (2002) Immunology 107:176-182

Related products:

Catalog No.	Product name	Applications
E16HU020	Mouse Anti-Human CD20, Purified mAb	FCM IF
E16HP020	Mouse Anti-Human CD20, PE Conjugated mAb	FCM IF
E16HC020	Mouse Anti-Human CD20, PE-Cy5 Conjugated mAb	FCM IF
E16HA020	Mouse Anti-Human CD20, APC Conjugated mAb	FCM IF

For Research Use Only