



## Mouse anti-Human CD45, FITC Conjugated mAb

**E16HF045**

<b><u>Catalog No.</u></b>	<b><u>Size</u></b>
E16HF045-100	100 Tests
E16HF045-050	50 Tests

**Description:**

4A9.4 reacts with CD45, a 180-220 kDa leukocyte common antigen (LCA). CD45 antigen is expressed at high levels on all hematopoietic cells including T and B lymphocytes, monocytes, granulocytes, NK cells and dendritic cells, but is not expressed on non-hematopoietic cells. CD45 antibody has also been reported to react weakly with mature blood erythrocytes and platelets. CD45 is a protein tyrosine phosphatase receptor that is critically important for T and B cell antigen receptor-mediated activation.\*Target of immunosuppressive antibody treatment.

<b>Storage Condition:</b>	Store at 4°C.DO NOT FREEZE. LIGHT SENSITIVE MATERIAL.
<b>Clone:</b>	4A9.4
<b>Isotype:</b>	Mouse IgG2a
<b>Reactivity:</b>	Human,Not yet tested in other species.
<b>Vol.per.Test:</b>	10µl/Test
<b>Storage Buffer:</b>	Phosphate-buffered solution, pH 7.4, containing 0.09% sodium azide and 0.2% (w/v) BSA
<b>Applications:</b>	FCM IF

**Experimental Methods:**

1. Take 100µl peripheral blood anticoagulated by EDTA and add to the bottom of 5ml tube;
2. Add 10µl labeled antibody to the bottom of flow tube mixing with the whole blood, incubate for 20 minutes at room temperature away from light;
3. Add 2 ml 1×RBC lysis buffer, incubate for 10 minutes away from light after mixing, dissolve red blood cells (recommended: RBC lysing Solution 10×, Cat.: FXP001);
4. Sample tube is set to 1000 rpm centrifugation for 5 minutes, discard the supernatant;
5. Add 2 ml PBS wash buffer to resuspend the cells, then 1000 rpm centrifugation for 5 minutes, discard the supernatant;
6. Add 0.5 ml PBS wash buffer to resuspend the cells and detect by flow cytometry (sample should be determined on the day on the machine and can also be added fixation overnight at 4 °C then measured).

[PBS wash buffer: PBS +1% FBS +0.1% NaN<sub>3</sub>; Cat.: FXP005]

[Cell fixation: 2% formaldehyde solution]

**Notices:**

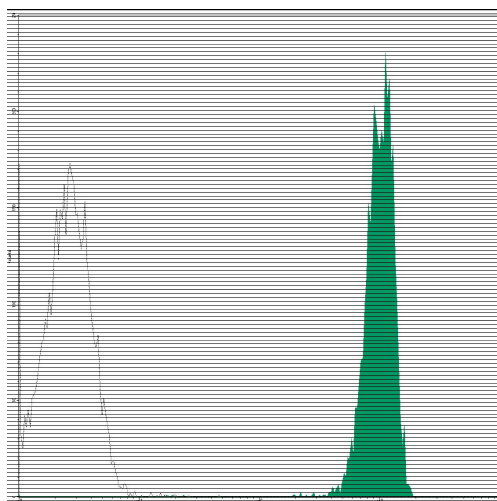
1. This reagent has been pre-diluted for use at the recommended Volume per Test.

**For Research Use Only**

We typically use  $1 \times 10^6$  cells in a 100 $\mu$ l experimental sample (a test);

2. Since applications vary, each investigator should titrate the reagent to obtain optimal results.
3. **Caution:** Sodium azide yields highly toxic hydrazoic acid under acidic conditions. Dilute azide compounds in running water before discarding to avoid accumulation of potentially explosive deposits in plumbing;
4. If the sample can not be timely analysis, please fixed;
5. **For research use only, not for diagnostic or therapeutic use.**

#### Profile of peripheral blood lymphocytes analyzed by flow cytometry



Human peripheral blood lymphocytes analyzed with FITC CD45 mAb

#### References

1. Knapp, W et al., eds. (1989) Leucocyte Typing IV: White Cell Differentiation Antigens, Oxford University Press, New York.
2. Trowbridge, IS and Thomas, ML. (1993) Annu. Rev. Immunol. 12:85.
3. Pulido, R et al., (1988) J. Immunol. 140:3851.
4. Roach, T et al., (1997) Curr. Biol. 7:408.

#### Related products:

Catalog No.	Product name	Applications
E16HU045	Mouse Anti-Human CD45, Purified mAb	FCM IF
E16HP045	Mouse Anti-Human CD45, PE Conjugated mAb	FCM IF
E16HC045	Mouse Anti-Human CD45, PE-Cy5 Conjugated mAb	FCM IF
E16HA045	Mouse Anti-Human CD45, APC Conjugated mAb	FCM IF
E16HB045	Mouse Anti-Human CD45, Biotin Conjugated mAb	FCM IF

**For Research Use Only**