



Mouse anti-Human CD45RA, FITC Conjugated mAb

E16HF0453

| <u>Catalog No.</u> | <u>Size</u> |
|---------------------------|--------------------|
| E16HF0453-100 | 100 Tests |
| E16HF0453-050 | 50 Tests |

Description:

4AH1100 reacts with the 220 kDa isoform A of CD45. This is clustered as CD45RA, and is expressed on naive/resting T cells and on medullary thymocytes. In comparison, CD45RO is expressed on memory/activated T cells and cortical thymocytes. CD45RA and CD45RO are useful for discriminating between naive and memory T cells in the study of the immune system.

| | |
|---------------------------|---|
| Storage Condition: | Store at 4°C. DO NOT FREEZE. LIGHT SENSITIVE MATERIAL. |
| Clone: | 4AH1100 |
| Isotype: | Mouse IgG2b |
| Reactivity: | Human, Not yet tested in other species. |
| Vol.per.Test: | 10 µl/Test |
| Storage Buffer: | Phosphate-buffered solution, pH 7.4, containing 0.09% sodium azide and 0.2% (w/v) BSA |
| Applications: | FC IHC IP IF WB |

Experimental Methods:

1. Take 100µl peripheral blood anticoagulated by EDTA and add to the bottom of 5ml tube;
2. Add 10µl labeled antibody to the bottom of flow tube mixing with the whole blood, incubate for 20 minutes at room temperature away from light;
3. Add 2 ml 1×RBC lysis buffer, incubate for 10 minutes away from light after mixing, dissolve red blood cells (recommended: RBC lysing Solution 10×, Cat.: E16XP001);
4. Sample tube is set to 1000 rpm centrifugation for 5 minutes, discard the supernatant;
5. Add 2 ml PBS wash buffer to resuspend the cells, then 1000 rpm centrifugation for 5 minutes, discard the supernatant;
6. Add 0.5 ml PBS wash buffer to resuspend the cells and detect by flow cytometry (sample should be determined on the day on the machine and can also be added fixation overnight at 4 °C then measured).

[PBS wash buffer: PBS +1% FBS +0.1% NaN₃; Cat.:E16XP005]

[Cell fixation: 2% formaldehyde solution]

Notices:

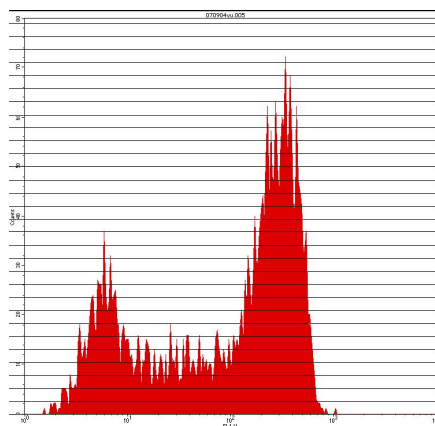
1. This reagent has been pre-diluted for use at the recommended Volume per Test.

For Research Use Only

We typically use 1×10^6 cells in a 100 μ l experimental sample (a test);

2. Since applications vary, each investigator should titrate the reagent to obtain optimal results.
3. **Caution:** Sodium azide yields highly toxic hydrazoic acid under acidic conditions. Dilute azide compounds in running water before discarding to avoid accumulation of potentially explosive deposits in plumbing;
4. If the sample can not be timely analysis, please fixed;
5. **For research use only, not for diagnostic or therapeutic use.**

Profile of peripheral blood lymphocytes analyzed by flow cytometry



Human peripheral blood lymphocytes analyzed with FITC CD45RA mAb

References

1. Knapp, W et al., eds. (1989) Leucocyte Typing IV: White Cell Differentiation Antigens, Oxford University Press, New York.
2. Trowbridge, IS and Thomas, ML. (1993) Annu. Rev. Immunol. 12:85.
3. Pulido, R et al., (1988) J. Immunol. 140:3851.
4. Roach, T et al., (1997) Curr. Biol. 7:408.

Related products:

| Catalog No. | Product name | Applications |
|-------------|--|-----------------|
| E16HU0453 | Mouse Anti-Human CD45RA, Purified mAb | FC IHC IP IF WB |
| E16HP0453 | Mouse Anti-Human CD45RA, PE Conjugated mAb | FC IHC IP IF WB |
| E16HB0453 | Mouse Anti-Human CD45RA, Biotin Conjugated mAb | FC IHC IP IF WB |

For Research Use Only