



## Mouse IgM Isotype Control, PE Conjugated mAb

**E16MCP004**

<b><u>Catalog No.</u></b>	<b><u>Size</u></b>
E16MCP004-100	100 Tests
E16MCP004-050	50 Tests

**Description:**

This antibody can be used as a mouse IgM isotype control in flow cytometry and other applications.

<b>Storage Condition:</b>	Store at 4°C.D0 NOT FREEZE. LIGHT SENSITIVE MATERIAL.
<b>Clone:</b>	4A7C2C7C12
<b>Isotype:</b>	Mouse IgM
<b>Vol.per.Test:</b>	10µl/Test
<b>Storage Buffer:</b>	Phosphate-buffered solution, pH 7.4, containing 0.09% sodium azide and 0.2% (w/v) BSA
<b>Applications:</b>	FCM IF

**Experimental Methods:**

1. Take 100µl peripheral blood anticoagulated by EDTA and add to the bottom of 5ml tube;
2. Add 10µl labeled antibody to the bottom of flow tube mixing with the whole blood, incubate for 20 minutes at room temperature away from light;
3. Add 2 ml 1×RBC lysis buffer, incubate for 10 minutes away from light after mixing, dissolve red blood cells (recommended: RBC lysing Solution 10×, Cat.: FXP001);
4. Sample tube is set to 1000 rpm centrifugation for 5 minutes, discard the supernatant;
5. Add 2 ml PBS wash buffer to resuspend the cells, then 1000 rpm centrifugation for 5 minutes, discard the supernatant;
6. Add 0.5 ml PBS wash buffer to resuspend the cells and detect by flow cytometry (sample should be determined on the day on the machine and can also be added fixation overnight at 4 °C then measured).

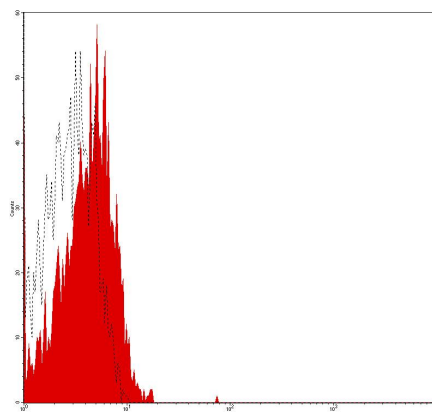
[PBS wash buffer: PBS +1% FBS +0.1% NaN<sub>3</sub>; Cat.: FXP005]

[Cell fixation: 2% formaldehyde solution]

**Notices:**

1. This reagent has been pre-diluted for use at the recommended Volume per Test.  
We typically use 1 X 10<sup>6</sup> cells in a 100µl experimental sample (a test);
2. Since applications vary, each investigator should titrate the reagent to obtain optimal results.
3. **Caution:** Sodium azide yields highly toxic hydrazoic acid under acidic conditions. Dilute azide compounds in running water before discarding to avoid accumulation of potentially explosive deposits in plumbing;
4. If the sample can not be timely analysis, please fixed;

**For Research Use Only**

**5. For research use only, not for diagnostic or therapeutic use.****Profile of peripheral blood lymphocytes analyzed by flow cytometry**

Human peripheral blood lymphocytes analyzed with PE Mouse IgM Isotype Control mAb

**Related products:**

Catalog No.	Product name	Applications
E16MCU004	Mouse IgM Isotype Control, Purified mAb	FCM IF
E16MCF004	Mouse IgM Isotype Control, FITC Conjugated mAb	FCM IF
E16MCP004	Mouse IgM Isotype Control, PE Conjugated mAb	FCM IF
E16MCC004	Mouse IgM Isotype Control, PE-Cy5 Conjugated mAb	FCM IF
E16MCA004	Mouse IgM Isotype Control, APC Conjugated mAb	FCM IF

**For Research Use Only**