



Rat anti-Mouse CD8, Purified mAb

E16MU008

<u>Catalog No.</u>	<u>Size</u>
E16MU008-100	100 Tests
E16MU008-050	50 Tests

Description:

The M43 clone monoclonal antibody reacts with the mouse CD8 molecule which expressed on most thymocytes and mature T lymphocytes Ts / c sub-group cells. CD8 is an antigen co-receptor on T cells that interacts with MHC class I on antigen-presenting cells or epithelial cells. CD8 promotes T cells activation through its association with the TRC complex and protein tyrosine kinase lck.

Storage Condition:	Store at 4°C. DO NOT FREEZE. LIGHT SENSITIVE MATERIAL.
Clone:	M43
Isotype:	Rat IgG2b
Reactivity:	Mouse, Not yet tested in other species.
Vol.per.Test:	10 µl/Test
Storage Buffer:	Phosphate-buffered solution, pH 7.4, containing 0.09% sodium azide and 0.2% (w/v) BSA
Applications:	FCM

Experimental Methods:

1. Take 100µl a certain amount of prepared cells and add to the bottom of 5 ml tube;
2. Add 10µl labeled antibody to the bottom of flow tube mixing with the whole blood, incubate for 20 minutes at room temperature away from light;
3. Add 2 ml PBS wash buffer to resuspend the cells, then 1000 rpm centrifugation for 5 minutes, discard the supernatant;
4. Add appropriate amount of fluorescent-labeled anti-Rat IgGs and incubate for 20 minutes away from light at room temperature.
5. Repeat step 5.
6. Add 0.3-0.5 ml PBS wash buffer to resuspend the cells and detect by flow cytometry (sample should be determined in two hours on the machine and can also be added fixation overnight at 4 °C then measured).

[PBS wash buffer: PBS +1% FBS +0.1% NaN₃; Cat.: E16XP005]

[Cell fixation: 2% formaldehyde solution]

Notices:

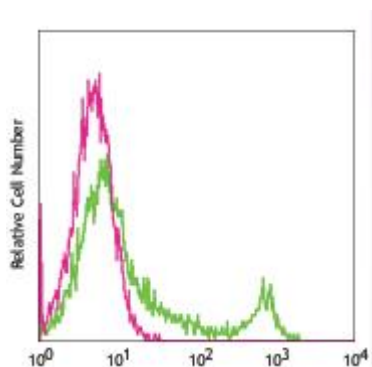
1. Since applications vary, each investigator should titrate the reagent to obtain optimal results.
2. **Caution:** Sodium azide yields highly toxic hydrazoic acid under acidic conditions. Dilute azide compounds in running water before discarding to avoid accumulation of potentially explosive

For Research Use Only

deposits in plumbing;

3. If the sample can not be timely analysis, please fixed;
4. **For research use only, not for diagnostic or therapeutic use.**

Profile of Mouse spleen cells analyzed by flow cytometry, FITC labeled goat anti-Rat IgG as secondary antibody staining.



Mouse spleen cells analyzed with Purified mouse CD8 mAb, followed by anti-Rat IgGs-FITC

Related products:

Catalog No.	Product name	Applications	
E16MU008	Rat Anti-Mouse CD8, Purified	FCM	IF
E16MF008	Rat Anti-Mouse CD8, FITC Conjugated mAb	FCM	IF
E16MC008	Rat Anti-Mouse CD8, PE-Cy5 Conjugated mAb	FCM	IF
E16MA008	Rat Anti-Mouse CD8, APC Conjugated mAb	FCM	IF

For Research Use Only