



TLR8 Polyclonal Antibody

E20-53393

Catalog Number:E20-53393

Product name:TLR8 Polyclonal Antibody

Amount:100ul

Applications:IHC-p

Reactivity:Human,Mouse,Rat

Gene Name:TLR8

Protein Name:Toll-like receptor 8

Human Gene Id:51311

Human Swiss Prot No:Q9NR97

Mouse Swiss Prot No:P58682

Immunogen:Recombinant Protein of TLR8

Specificity:The antibody detects endogenous TLR8 protein.

Formulation:PBS, pH 7.4, containing 0.5%BSA, 0.02% sodium azide as Preservative and 50% Glycerol.

Source:Rabbit

Dilution:IHC: 1:200-500

Purification:The antibody was affinity-purified from rabbit antiserum by affinity-chromatography using epitope-specific immunogen.

Storage Stability:-20° C/1 year

Other Names:Toll-like receptor 8; CD288

Background:toll like receptor 8(TLR8) Homo sapiens The protein encoded by this gene is a member of the Toll-like receptor (TLR) family which plays a fundamental role in pathogen recognition and activation of innate immunity. TLRs are highly conserved from Drosophila to humans and share structural and functional similarities. They recognize pathogen-associated molecular patterns (PAMPs) that are expressed on infectious agents, and mediate the production of cytokines necessary for the development of effective immunity. The various TLRs exhibit different patterns of expression. This gene is predominantly expressed in lung and peripheral blood leukocytes, and lies in close proximity to another

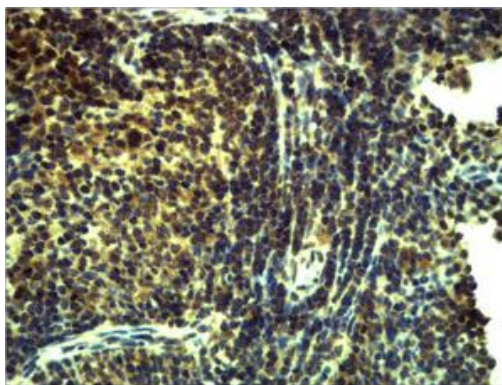
For Research Use Only

family member, TLR7, on chromosome X. [provided by RefSeq, Jul 2008].

Function:function:Participates in the innate immune response to microbial agents. Acts via MYD88 and TRAF6, leading to NF-kappa-B activation, cytokine secretion and the inflammatory response.,similarity:Belongs to the Toll-like receptor family.,similarity:Contains 1 TIR domain.,similarity:Contains 24 LRR (leucine-rich) repeats.,subunit:Binds MYD88 via their respective TIR domains.,tissue specificity:Detected in brain, heart, lung, liver, placenta, in monocytes, and at lower levels in CD11c+ immature dendritic cells.

Subcellular Location:Golgi membrane,endoplasmic reticulum membrane,endosome membrane, integral component of membrane,endolysosome membrane.

Expression:Liver,PCR rescued clones,Placenta.



Immunohistochemical analysis of paraffin- embedded Mouse Spleen Tissue using TLR8 Polyclonal Antibody.