



p70 S6 kinase α Polyclonal Antibody

E20-53426

Catalog Number:E20-53426

Product name:p70 S6 kinase α Polyclonal Antibody

Amount:100ul

Applications:WB,IF,IHC-p

Reactivity:Human, Mouse,Rat

Gene Name:RPS6KB1

Protein Name:Ribosomal protein S6 kinase beta-1

Human Gene Id:6198

Human Swiss Prot No:P23443

Mouse Swiss Prot No:Q8BSK8

Rat Swiss Prot No:P67999

Immunogen:Recombinant Protein of p70 S6 kinase α

Specificity:The antibody detects endogenous p70 S6 kinase α protein.

Formulation:PBS, pH 7.4, containing 0.5%BSA, 0.02% sodium azide as Preservative and 50% Glycerol.

Source:Rabbit

Dilution:WB: 1:1000-2000 IHC: 1:200-500 IF 1:200

Purification:The antibody was affinity-purified from rabbit antiserum by affinity-chromatography using epitope-specific immunogen.

Storage Stability:-20° C/1 year

Other Names:RPS6KB1; STK14A; Ribosomal protein S6 kinase beta-1; S6K-beta-1; S6K1; 70 kDa ribosomal protein S6 kinase 1; P70S6K1; p70-S6K 1; Ribosomal protein S6 kinase I; Serine/threonine-protein kinase 14A; p70 ribosomal S6 kinase alpha; p70 S6 kinase alpha; p70 S6K-alpha; p70 S6KA

Observed Band(KD):70,85

Background:ribosomal protein S6 kinase B1(RPS6KB1) Homo sapiens This gene encodes a member of the ribosomal S6 kinase family of serine/threonine kinases. The encoded protein responds to mTOR

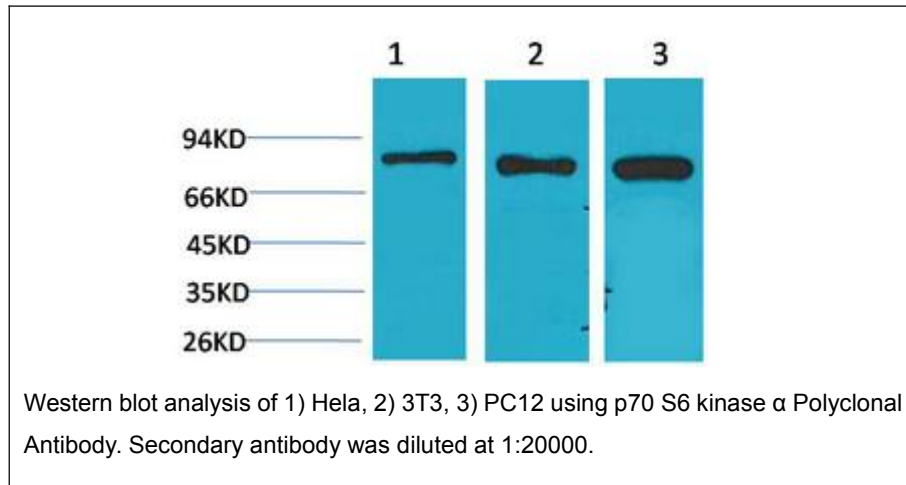
For Research Use Only

(mammalian target of rapamycin) signaling to promote protein synthesis, cell growth, and cell proliferation. Activity of this gene has been associated with human cancer. Alternatively spliced transcript variants have been observed. The use of alternative translation start sites results in isoforms with longer or shorter N-termini which may differ in their subcellular localizations. There are two pseudogenes for this gene on chromosome 17. [provided by RefSeq, Jan 2013].

Function: catalytic activity: ATP + a protein = ADP + a phosphoprotein., enzyme regulation: Activation by serine/threonine phosphorylation and protein kinase C, inactivated by type 2A phosphatase., function: Phosphorylates specifically ribosomal protein S6 in response to insulin or several classes of mitogens., similarity: Belongs to the protein kinase superfamily., similarity: Belongs to the protein kinase superfamily. AGC Ser/Thr protein kinase family. S6 kinase subfamily., similarity: Contains 1 AGC-kinase C-terminal domain., similarity: Contains 1 protein kinase domain., subunit: Interacts with PPP1R9A/neurabin-1., tissue specificity: Widely expressed.

Subcellular Location: nucleus, nucleoplasm, cytoplasm, mitochondrion, mitochondrial outer membrane, cytosol, cell surface, cell junction, neuron projection, synapse, perinuclear region of cytoplasm.

Expression: Epithelium, Eye, Testis.



For Research Use Only