



Stat4 Polyclonal Antibody

E20-53455

Catalog Number:E20-53455

Product name:Stat4 Polyclonal Antibody

Amount:100ul

Applications:WB , IHC-p

Reactivity:.,Human,

Gene Name:STAT4

Protein Name:Signal transducer and activator of transcription 4

Human Gene Id:6775

Human Swiss Prot No:Q14765

Mouse Swiss Prot No:P42228

Immunogen:Synthesized peptide derived from human Stat4 around the non-phosphorylation site of Y693.

Specificity:The antibody detects endogenous Stat4 protein.

Formulation:PBS, pH 7.4, containing 0.5%BSA, 0.02% sodium azide as Preservative and 50% Glycerol.

Source:Rabbit

Dilution:Western Blot: 1/500 - 1/2000. Immunohistochemistry: 1/100 - 1/300. Immunoprecipitation: 2-5 ug/mg lysate. ELISA: 1/5000. Not yet tested in other applications.

Purification:The antibody was affinity-purified from rabbit antiserum by affinity-chromatography using epitope-specific immunogen.

Storage Stability:-20°C/1 year

Other Names:STAT4; Signal transducer and activator of transcription 4

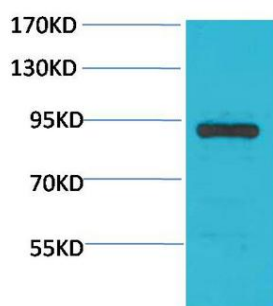
Observed Band(KD):86

Background:signal transducer and activator of transcription 4(STAT4) Homo sapiens The protein encoded by this gene is a member of the STAT family of transcription factors. In response to cytokines and growth factors, STAT family members are phosphorylated by the receptor associated kinases, and then form homo- or heterodimers that translocate to the cell nucleus where they act as transcription

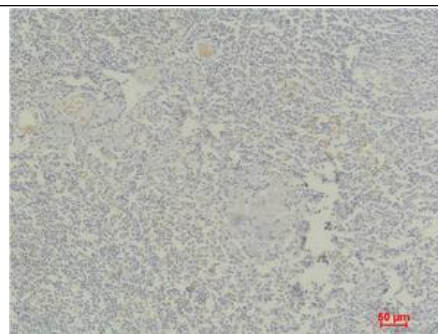
For Research Use Only

activators. This protein is essential for mediating responses to IL12 in lymphocytes, and regulating the differentiation of T helper cells. Mutations in this gene may be associated with systemic lupus erythematosus and rheumatoid arthritis. Alternate splicing results in multiple transcript variants that encode the same protein. [provided by RefSeq, Aug 2011],

Function:disease:Genetic variations in STAT4 are associated with susceptibility to rheumatoid arthritis (RA) [MIM:180300]. Rheumatoid arthritis is a complex, multifactorial disorder. It is one of the most common autoimmune diseases and it is characterized by inflammation of synovial tissue and joint destruction.,disease:Genetic variations in STAT4 are associated with susceptibility to systemic lupus erythematosus type 11 (SLEB11) [MIM:612253]. Systemic lupus erythematosus (SLE) is a chronic autoimmune disease with a complex genetic basis. SLE is an inflammatory, and often febrile multisystemic disorder of connective tissue characterized principally by involvement of the skin, joints, kidneys, and serosal membranes. It is thought to represent a failure of the regulatory mechanisms of the autoimmune system.,function:Carries out a dual function: signal transduction and activation of transcription.



Western blot analysis of Hela using Stat4 Polyclonal Antibody. Secondary antibody was diluted at 1:20000.



Immunohistochemical analysis of paraffin-embedded Human Tonsil Tissue using Stat4 Polyclonal Antibody.