



Transferrin Monoclonal Antibody

E20-53581

Catalog Number:E20-53581

Product name:Transferrin Monoclonal Antibody

Amount:100ul

Applications:IHC-p,ELISA

Reactivity:.,Human

Gene Name:TF

Protein Name:Serotransferrin (Transferrin) (Beta-1 metal-binding globulin) (Siderophilin)

Human Gene Id:7018

Human Swiss Prot No:P02787

Mouse Swiss Prot No:Q92111

Immunogen:Protein

Specificity:Transferrin protein detects endogenous levels of Transferrin

Formulation:Liquid in PBS containing 50% glycerol, 0.5% BSA and 0.02% sodium azide.

Source:Mouse

Dilution:IHC 1:100-200

Purification:The antibody was affinity-purified from mouse ascites by affinity-chromatography using specific immunogen.

Concentration:1 mg/ml

Storage Stability:-20°C/1 year

Other Name:TF; Serotransferrin; Transferrin; Beta-1 metal-binding globulin; Siderophilin

Observed Band(KD):77

Background:transferrin(TF) Homo sapiens This gene encodes a glycoprotein with an approximate molecular weight of 76.5 kDa. It is thought to have been created as a result of an ancient gene duplication event that led to generation of homologous C and N-terminal domains each of which binds one ion of ferric iron.

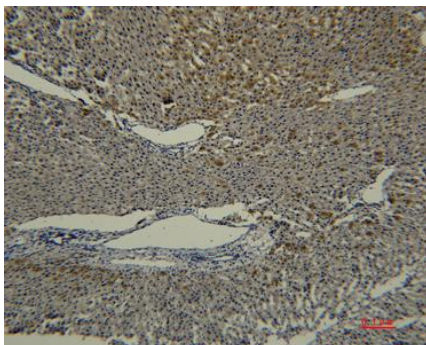
Function:disease:Defects in TF are the cause of atransferrinemia [MIM:209300]. Atransferrinemia is rare

For Research Use Only

autosomal recessive disorder characterized by iron overload and hypochromic anemia.,function:Transferrins are iron binding transport proteins which can bind two $\text{Fe}(3+)$ ions in association with the binding of an anion, usually bicarbonate. It is responsible for the transport of iron from sites of absorption and heme degradation to those of storage and utilization. Serum transferrin may also have a further role in stimulating cell proliferation.,online information:Transferrin entry,polymorphism:Different polymorphic variants of transferrin are known. The sequence shown is the predominant electrophoretic variant (C1 or TF*C1).,similarity:Belongs to the transferrin family.,similarity:Contains 2 transferrin-like domains.

Subcellular Location:extracellular region,extracellular space,early endosome,late endosome, clathrin-coated pit, basal plasma membrane,cell surface,endosome membrane,cytoplasmic, membrane-bounded vesicle, apical plasma membrane,vesicle coat,endocytic vesicle.

Expression:Bile,Brain,Cajal-Retzius cell,Caudate nucleus,Fetal brain cortex,Fetal liver, Heart, Liver, Plasma.



Immunohistochemical analysis of paraffin-embedded rat-liver using antibody diluted at 1:50.