



Transferrin Monoclonal Antibody (7H11)

E20-53588

Catalog No:E20-53588

Applications:IHC-p, WB, ELISA

Reactivity:Human

Gene Name:TF

Protein Name:Serotransferrin (Transferrin) (Beta-1 metal-binding globulin) (Siderophilin)

Human Gene Id:7018

Human Swiss Prot No:P02787

Mouse Swiss Prot No:Q92111

Immunogen:Protein

Specificity:Transferrin protein detects endogenous levels of Transferrin

Formulation:Liquid in PBS containing 50% glycerol, 0.5% BSA and 0.02% sodium azide.

Source:Mouse

Dilution:IHC 1:100-200, WB 1:1000-2000

Purification:The antibody was affinity-purified from mouse ascites by affinity-chromatography using specific immunogen.

Concentration:1 mg/ml

Storage Stability:-20°C/1 year

Other Names:TF; Serotransferrin; Transferrin; Beta-1 metal-binding globulin; Siderophilin

Observed Band(KD):77

Background:transferrin(TF) Homo sapiens This gene encodes a glycoprotein with an approximate molecular weight of 76.5 kDa. It is thought to have been created as a result of an ancient gene duplication event that led to generation of homologous C and N-terminal domains each of which binds one ion of ferric iron.

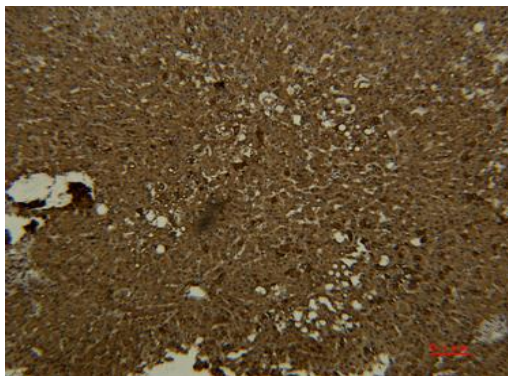
Function:disease:Defects in TF are the cause of atransferrinemia [MIM:209300]. Atransferrinemia is rare autosomal recessive disorder characterized by iron overload and hypochromic anemia.,function:Transferrins are iron binding transport proteins which can bind two Fe(3+) ions in

For Research Use Only

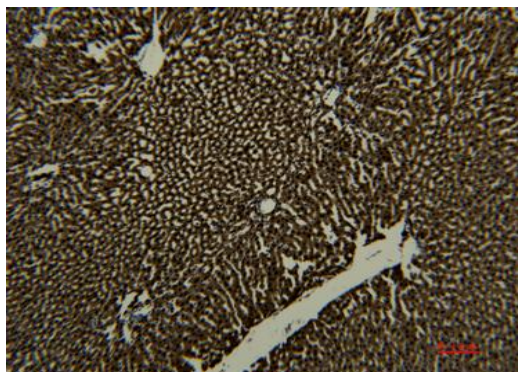
association with the binding of an anion, usually bicarbonate.

Subcellular Location: extracellularregion, extracellularspace, earlyendosome, lateendosome, clathrin-coatedpit, basal plasma membrane, cell surface, endoso memembrane, cytoplasmic, membrane- boundedvesicle, apical plasma membrane,vesicle coat,endocytic vesicle.

Expression:Bile,Brain,Cajal-Retzius cell,Caudate nucleus,Fetal brain cortex,Fetal liver, Heart, Liver, Plasma.



Immunohistochemical analysis of paraffin-embedded human-liver using antibody diluted at 1:50.



Immunohistochemical analysis of paraffin-embedded rat-liver using antibody diluted at 1:50.