



MSK1 Polyclonal Antibody

E20-72899

Catalog Number:E20-72899

Amount:100ul

Applications:WB,IHC-p,ELISA

Reactivity:Human,Mouse

Gene Name:RPS6KA5

Protein Name:Ribosomal protein S6 kinase alpha-5

Human Gene Id:9252

Human Swiss Prot No:O75582

Mouse Gene Id:73086

Mouse Swiss Prot No:Q8C050

MW (Da):89865

Observed Band(KD):90

Source:Rabbit

Concentration:1 mg/ml

Storage Stability:-20°C/1 year

Expression:Pancreas,Placenta,Uterus.

Immunogen:The antiserum was produced against peptide derived from human MSK1 181-230aa

Specificity:MSK1 Polyclonal Antibody detects endogenous levels of MSK1 protein.

Formulation:Liquid in PBS containing 50% glycerol, 0.5% BSA and 0.02% sodium azide.

Dilution:Western Blot: 1/500 - 1/2000. Immunohistochemistry: 1/100 - 1/300. ELISA: 1/40000.

Purification:The antibody was affinity-purified from rabbit antiserum by affinity-chromatography using epitope-specific immunogen.

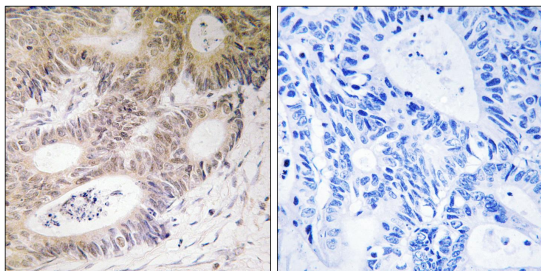
Other Name:RPS6KA5; Ribosomal protein S6 kinase alpha-5; S6K-alpha-5; 90 kDa ribosomal protein S6 kinase 5; Nuclear mitogen- and stress-activated protein kinase 1; RSK-like protein kinase; RSKL

Background:catalytic activity:ATP + a protein = ADP + a phosphoprotein.,cofactor:Magnesium.,enzyme regulation:Appears to be activated by multiple phosphorylations on threonine and serine residues.

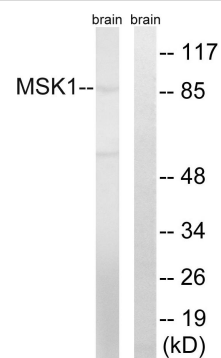
For Research Use Only

ERK1/2 and MAPK14/p38-alpha may play a role in this process.

Subcellular Location:nucleus,nucleoplasm,cytoplasm.



Immunohistochemistry analysis of paraffin- embedded human colon carcinoma tissue, using MSK1 Antibody. The picture on the right is blocked with the synthesized peptide.



Western blot analysis of lysates from mouse brain, using MSK1 Antibody. The lane on the right is blocked with the synthesized peptide.