



## TRIP15 Polyclonal Antibody

E20-74739

**Catalog Number:**E20-74739

**Amount:**100ul

**Applications:**WB,IHC-p,IF,ELISA

**Reactivity:**Human,Mouse,Rat,Monkey

**Gene Name:**COPS2

**Protein Name:**COP9 signalosome complex subunit 2

**Human Gene Id:**9318

**Human Swiss Prot No:**P61201

**Mouse Gene Id:**12848

**Mouse Swiss Prot No:**P61202

**Rat Gene Id:**261736

**Rat Swiss Prot No:**P61203

**Immunogen:**The antiserum was produced against synthesized peptide derived from human COPS2. AA range:181-230

**Specificity:**TRIP15 Polyclonal Antibody detects endogenous levels of TRIP15 protein.

**Formulation:**Liquid in PBS containing 50% glycerol, 0.5% BSA and 0.02% sodium azide.

**Source:**Rabbit

**Dilution:**Western Blot: 1/500 - 1/2000. Immunohistochemistry: 1/100 - 1/300. Immunofluorescence: 1/200 - 1/1000. ELISA: 1/20000. Not yet tested in other applications.

**Purification:**The antibody was affinity-purified from rabbit antiserum by affinity-chromatography using epitope-specific immunogen.

**Concentration:**1 mg/ml

**Storage Stability:**-20°C/1 year

**Other Name:**COPS2; CSN2; TRIP15; COP9 signalosome complex subunit 2; SGN2; Signalosome subunit 2; Alien homolog; JAB1-containing signalosome subunit 2; Thyroid receptor-interacting protein 15; TR-interacting protein 15; TRIP-15

**For Research Use Only**

**Molecular Weight (Da):**51597

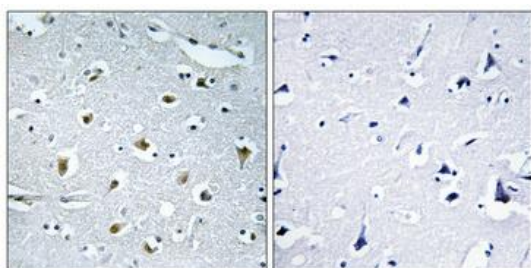
**Observed Band(KD):**55

**Background:**function:Essential component of the COP9 signalosome complex (CSN), a complex involved in various cellular and developmental processes. The CSN complex is an essential regulator of the ubiquitin (Ubl) conjugation pathway by mediating the deneddylation of the cullin subunits of SCF-type E3 ligase complexes, leading to decrease the Ubl ligase activity of SCF-type complexes such as SCF, CSA or DDB2. The complex is also involved in phosphorylation of p53/TP53, c-jun/JUN, IkkappaBalpha/NFKBIA, ITPK1 and IRF8/ICSBP,

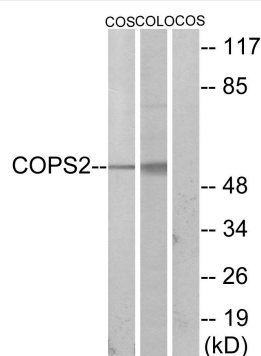
**Function:**function:Essential component of the COP9 signalosome complex (CSN), a complex involved in various cellular and developmental processes. The CSN complex is an essential regulator of the ubiquitin (Ubl) conjugation pathway by mediating the deneddylation of the cullin subunits of SCF-type E3 ligase complexes.

**Subcellular Location:**nucleoplasm,cytoplasm,COP9 signalosome,

**Expression:**rain,Coronary artery,Pituitary,Skeletal muscle,



Immunohistochemical analysis of paraffin-embedded Human brain. Antibody was diluted at 1:100 (4°,overnight). High-pressure and temperature Tris-EDTA, pH8.0 was used for antigen retrieval. Negative control (right) obtained from antibody was pre-absorbed by immunogen peptide.



Western blot analysis of lysates from COS7 and COLO205 cells using COPS2 Antibody. The lane on the right is blocked with the synthesized peptide.