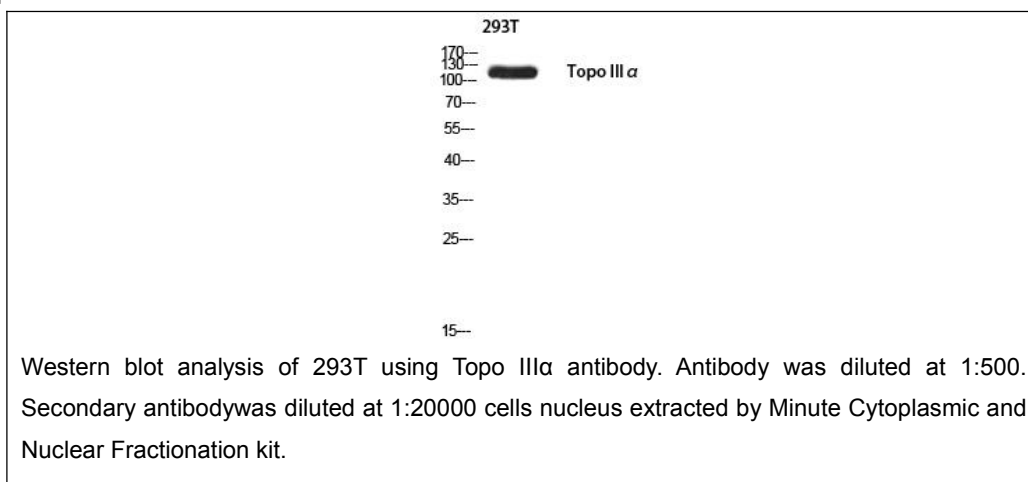




## Topo III $\alpha$ Rabbit Polyclonal Antibody

**E20-75666****Catalog No:**E20-75666**Applications:**WB,ELISA**Reactivity:**Human,Mouse**Gene Name:**TOP3A**Protein Name:**DNA topoisomerase 3-alpha**Human Gene Id:**7156**Human Swiss Prot No:**Q13472**Mouse Gene Id:**21975**Mouse Swiss Prot No:**O70157**Immunogen:**Synthesized peptide derived from Topo III $\alpha$  . at AA range: 350-430**Specificity:**Topo III $\alpha$  Polyclonal Antibody detects endogenous levels of Topo III $\alpha$  protein.**Formulation:**Liquid in PBS containing 50% glycerol, 0.5% BSA and 0.02% sodium azide.**Source:**Rabbit**Dilution:**Western Blot: 1/500 - 1/2000. ELISA: 1/10000. Not yet tested in other applications.**Purification:**The antibody was affinity-purified from rabbit antiserum by affinity-chromatography using epitope-specific immunogen.**Concentration:**1 mg/ml**Storage Stability:**-20°C/1 year**Other Names:**TOP3A; TOP3; DNA topoisomerase 3-alpha; DNA topoisomerase III alpha**Molecular Weight (Da):**112372**Observed Band (KD):**115**Background:**topoisomerase (DNA) III alpha(TOP3A) Homo sapiens This gene encodes a DNA topoisomerase, an enzyme that controls and alters the topologic states of DNA during transcription.**Function:**catalytic activity:ATP-independent breakage of single-stranded DNA, followed by passage and rejoining.,function:Reduces the number of supercoils in a highly negatively supercoiled DNA.**Subcellular Location:**inucleus,nucleoplasm,chromosome,cytosol,PML body.**Expression:**Testis.**For Research Use Only**