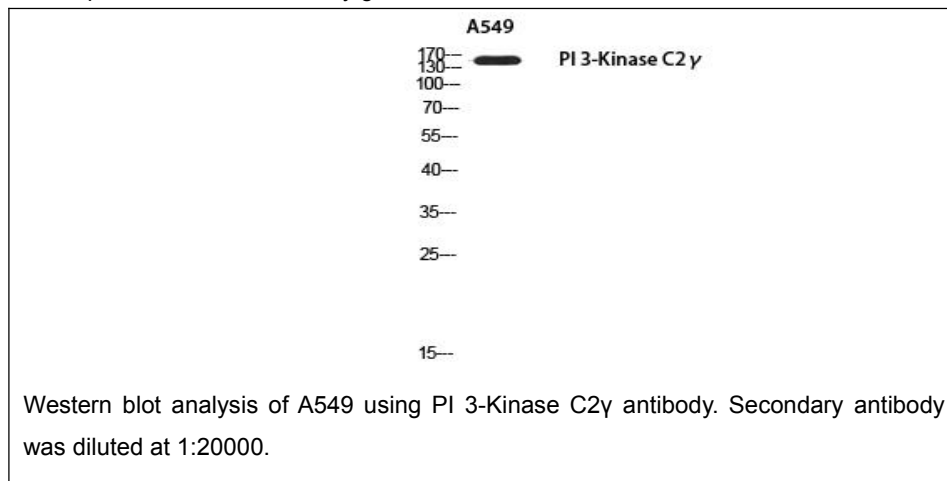




PI 3-Kinase C2 γ Rabbit Polyclonal Antibody

E20-75683**Catalog No:**E20-75683**Applications:**WB,ELISA**Reactivity:**Human**Gene Name:**PIK3C2G**Protein Name:**Phosphatidylinositol 4-phosphate 3-kinase C2 domain-containing subunit gamma**Human Gene Id:**5288**Human Swiss Prot No:**O75747**Mouse Swiss Prot No:**O70167**Immunogen:**Synthesized peptide derived from the N-terminal region of human PI 3-Kinase C2 γ .**Specificity:**PI 3-Kinase C2 γ Polyclonal Antibody detects endogenous levels of PI 3-Kinase C2 γ protein.**Formulation:**Liquid in PBS containing 50% glycerol, 0.5% BSA and 0.02% sodium azide.**Source:**Rabbit**Dilution:**Western Blot: 1/500 - 1/2000. ELISA: 1/10000. Not yet tested in other applications.**Purification:**The antibody was affinity-purified from rabbit antiserum by affinity-chromatography using epitope-specific immunogen.**Concentration:**1 mg/ml**Storage Stability:**-20°C/1 year**Other Names:**PIK3C2G; Phosphatidylinositol 4-phosphate 3-kinase C2 domain-containing subunit gamma; PI3K-C2-gamma; PtdIns-3-kinase C2 subunit gamma; Phosphoinositide 3-kinase-C2-gamma**Molecular Weight (Da):**166095**Observed Band (KD):**160**Background:**phosphatidylinositol-4-phosphate 3-kinase catalytic subunit type 2 gamma(PIK3C2G) Homo sapiens The protein encoded by this gene belongs to the phosphoinositide 3-kinase (PI3K) family.**Function:**catalytic activity:ATP + 1-phosphatidyl-1D-myo-inositol 4-phosphate = ADP + 1-phosphatidyl-1D-myo-inositol 3,4-bisphosphate**Subcellular Location:**intracellular,cytosol,plasma membrane,phosphatidylinositol 3-kinase complex**Expression:**Epithelium,Liver,Mammary gland.**For Research Use Only**