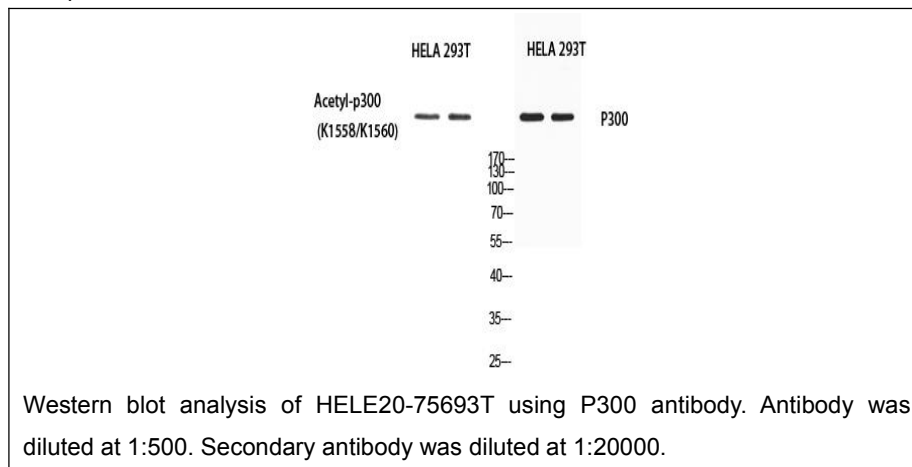




## p300 Antibody

**E20-75693****Catalog No:**E20-75693**Applications:**WB,ELISA**Reactivity:**Human,Mouse**Gene Name:**EP300**Protein Name:**Histone acetyltransferase p300**Human Gene Id:**2033**Human Swiss Prot No:**Q09472**Mouse Swiss Prot No:**B2RWS6**Immunogen:**Synthesized peptide derived from the Internal region of human p300.**Specificity:**p300 Polyclonal Antibody detects endogenous levels of p300 protein.**Formulation:**Liquid in PBS containing 50% glycerol, 0.5% BSA and 0.02% sodium azide.**Source:**Rabbit**Dilution:**Western Blot: 1/500 - 1/2000. ELISA: 1/10000. Not yet tested in other applications..**Purification:**The antibody was affinity-purified from rabbit antiserum by affinity-chromatography using epitope-specific immunogen.**Concentration:**1 mg/ml**Storage Stability:**-20°C/1 year**Other Names:**EP300; P300; Histone acetyltransferase p300; p300 HAT; E1A-associated protein p300**Molecular Weight (Da):**264161**Observed Band (KD):**300**Background:**E1A binding protein p300(EP300) Homo sapiens This gene encodes the adenovirus E1A-associated cellular p300 transcriptional co-activator protein.**Function:**catalytic activity:Acetyl-CoA + histone = CoA + acetylhistone.,disease:Chromosomal aberrations involving EP300 may be a cause of acute myeloid leukemias.**Subcellular Location:**histone acetyl transferase complex, nucleus, nucleoplasm, transcription factor complex, cytoplasm**Expression:**Epithelium,Skin.**For Research Use Only**