



S-100 α Antibody

E20-75732

Catalog No:E20-75732

Applications:WB,IHC-p,ELISA

Reactivity:Human,Mouse,Rat

Gene Name:S100A1

Protein Name:Protein S100-A1

Human Gene Id:6271

Human Swiss Prot No:P23297

Mouse Gene Id:20193

Mouse Swiss Prot No:P56565

Rat Swiss Prot No:P35467

Immunogen:The antiserum was produced against synthesized peptide derived from the Internal region of human S100A1. AA range:1-50

Specificity:S-100 α Polyclonal Antibody detects endogenous levels of S-100 α protein.

Formulation:Liquid in PBS containing 50% glycerol, 0.5% BSA and 0.02% sodium azide.

Source:Rabbit

Dilution:Western Blot: 1/500 - 1/2000. IHC-p: 1:100-1:300. ELISA: 1/10000. Not yet tested in other applications.

Purification:The antibody was affinity-purified from rabbit antiserum by affinity-chromatography using epitope-specific immunogen.

Concentration:1 mg/ml

Storage Stability:-20°C/1 year

Other Names:S100A1; S100A; Protein S100-A1; S-100 protein alpha chain; S-100 protein subunit alpha; S100 calcium-binding protein A1

Observed Band (KD):10

Background:S100 calcium binding protein A1(S100A1) Homo sapiens The protein encoded by this gene is a member of the S100 family of proteins containing 2 EF-hand

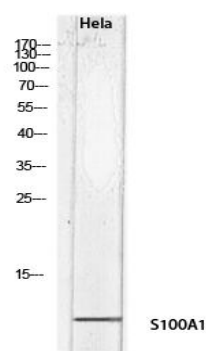
For Research Use Only

calcium-binding motifs.

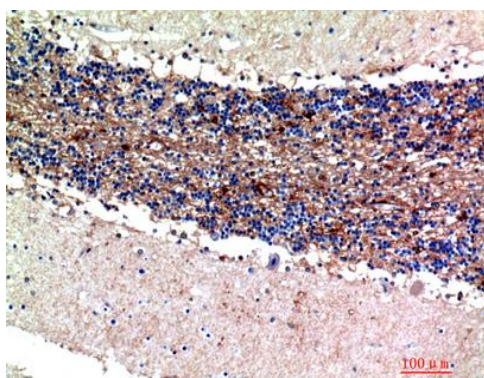
Function:Weakly binds calcium but binds zinc very tightly-distinct binding sites with different affinities exist for both ions on each monomer.

Subcellular Location:nucleus,sarcoplasmic reticulum,Z disc,M band,neuron projection, protein complex.

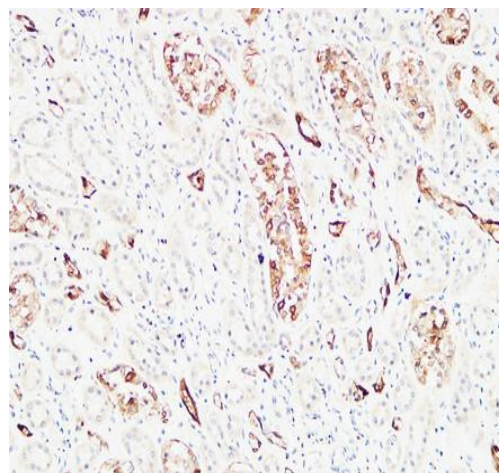
Expression: Caudate nucleus,Heart,Skin.



Western blot analysis of HeLa lysis using S100A1 antibody. Antibody was diluted at 1:500. Secondary antibody was diluted at 1:20000.



Immunohistochemical analysis of paraffin-embedded human-brain, antibody was diluted at 1:200.



Immunohistochemical analysis of paraffin-embedded Human kidney. Antibody was diluted at 1:200(4°,overnight). High-pressure and temperature EDTA, pH8.0 was used for antigen retrieval. Secondary antibody was diluted at 1:200(room temperature, 30 min).