



## TP53INP2 Antibody

E20-75733

**Catalog No:**E20-75733

**Applications:**WB,IHC-p,ELISA

**Reactivity:**Human

**Gene Name:**TP53INP2

**Protein Name:**Tumor protein p53-inducible nuclear protein 2

**Human Gene Id:**58476

**Human Swiss Prot No:**Q8IXH6

**Mouse Gene Id:**68728

**Mouse Swiss Prot No:**Q8CFU8

**Immunogen:**The antiserum was produced against synthesized peptide derived from the C-terminal region of human TP53INP2. AA range:161-210

**Specificity:**TP53INP2 Polyclonal Antibody detects endogenous levels of TP53INP2 protein.

**Formulation:**Liquid in PBS containing 50% glycerol, 0.5% BSA and 0.02% sodium azide.

**Source:**Rabbit

**Dilution:**Western Blot: 1/500 - 1/2000. IHC-p: 1:100-1:300. ELISA: 1/10000. Not yet tested in other applications.

**Purification:**The antibody was affinity-purified from rabbit antiserum by affinity-chromatography using epitope-specific immunogen.

**Concentration:**1 mg/ml

**Storage Stability:**-20°C/1 year

**Other Names:**TP53INP2; C20orf110; DOR; PINH; Tumor protein p53-inducible nuclear protein 2; Diabetes and obesity-regulated gene; p53-inducible protein U; PIG-U

**Molecular Weight (Da):**23980

**Observed Band (KD):**24

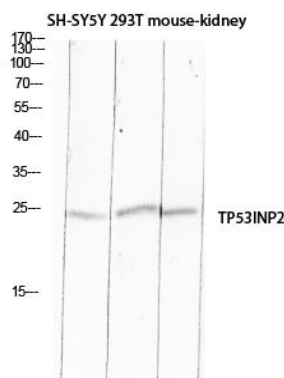
**Background:**tumor protein p53 inducible nuclear protein 2(TP53INP2) Homo sapiens

**For Research Use Only**

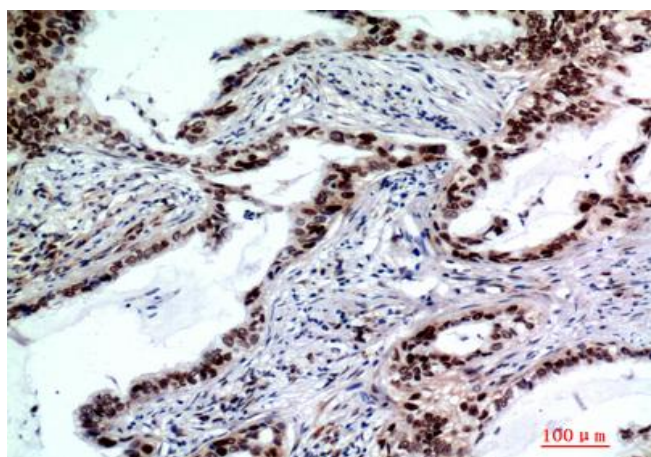
The protein encoded by this gene promotes autophagy and is essential for proper autophagosome formation and processing.

**Subcellular Location:**nucleus,autophagosome,cytosol,PML body,cytoplasmic vesicle.

**Expression:**Eye,Heart.



Western blot analysis of SH-SY5Y, 293T, mouse-kidney lysis using TP53INP2 antibody. Antibody was diluted at 1:500. Secondary antibody was diluted at 1:20000 cells nucleus extracted by Minute TM Cytoplasmic and Nuclear Fractionation kit.



Immunohistochemical analysis of paraffin-embedded human-lung cancer, antibody was diluted at 1:200.