



Synapsin-1 Antibody

E20-75737

Catalog No:E20-75737

Applications:WB,ELISA

Reactivity:Human,Mouse,Rat

Gene Name:SYN1

Protein Name:Synapsin-1

Human Gene Id:6853

Human Swiss Prot No:P17600

Mouse Gene Id:20964

Mouse Swiss Prot No:O88935

Rat Swiss Prot No:P09951

Immunogen:Synthesized peptide derived from the Internal region of human Synapsin-1.

Specificity:Synapsin-1 Polyclonal Antibody detects endogenous levels of Synapsin-1 protein.

Formulation:Liquid in PBS containing 50% glycerol, 0.5% BSA and 0.02% sodium azide.

Source:Rabbit

Dilution:Western Blot: 1/500 - 1/2000. ELISA: 1/10000. Not yet tested in other applications.

Purification:The antibody was affinity-purified from rabbit antiserum by affinity-chromatography using epitope-specific immunogen.

Concentration:1 mg/ml

Storage Stability:-20°C/1 year

Other Names:SYN1; Synapsin-1; Brain protein 4.1; Synapsin I

Observed Band(KD):75

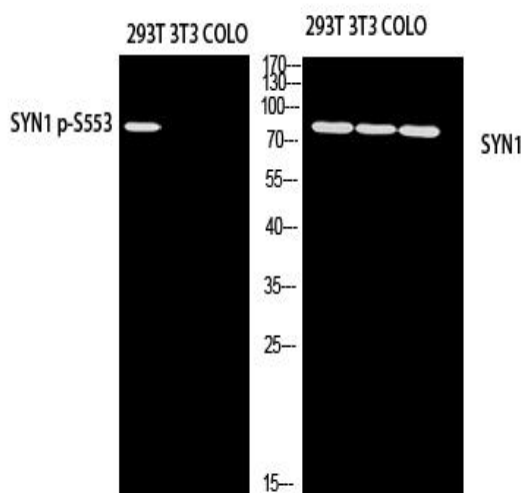
Background:synapsin I(SYN1) Homo sapiens This gene is a member of the synapsin gene family. Synapsins encode neuronal phosphoproteins which associate with the cytoplasmic surface of synaptic vesicles.

For Research Use Only

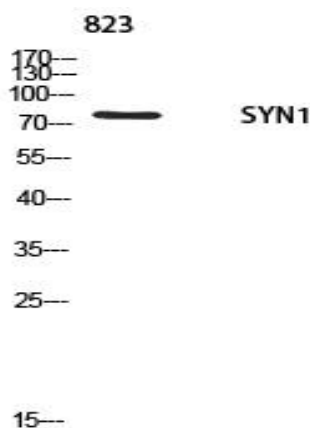
Function:disease:Defects in SYN1 are a cause of epilepsy X-linked with variable learning disabilities and behavior disorders [MIM:300491]. XELBD is characterized by variable combinations o

Subcellular Location:synaptonemal complex,Golgi apparatus, cytosol, synaptic vesicle, postsynaptic density, cell junction, dendrite, synaptic vesicle membrane,terminal bouton, myelin sheath, presynaptic active zone.

Expression:Brain,Brain cortex.



Western blot analysis of 293T, 3T3, COLO using SYN1 antibody. Antibody was diluted at 1:1000. Secondary antibody was diluted at 1:20000.



Western blot analysis of 823 using SYN1 antibody. Antibody was diluted at 1:1000. Secondary antibody was diluted at 1:20000.