



## Bcl-xl protein

E20-80115

**Catalog No.:** E20-80115

**Applications:** WB,SDS-PAGE

**Reactivity:** Human

**Gene Name:** BCL2L1 BCL2L BCLX

**Protein Name:** Bcl-Xl

**Sequence:** Amino acid:130-233, with his-MBP tag.

**Human Gene Id:** 598

**Human Swiss Prot No:** Q07817

**Mouse Swiss Prot No:** Q64373

**Formulation:** Liquid in PBS

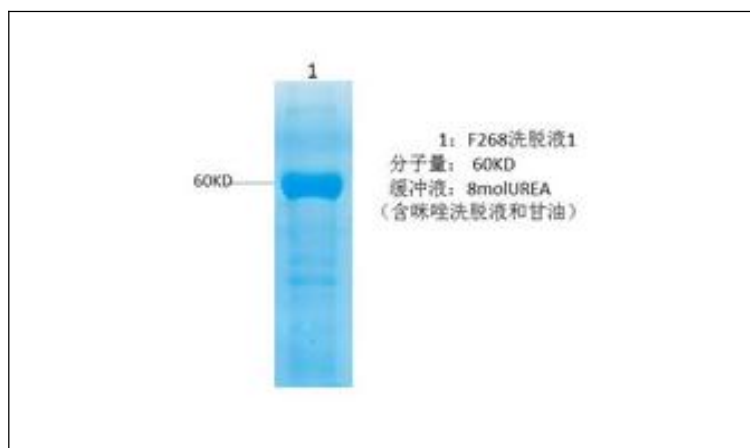
**Concentration:** SDS-PAGE >90%

**Storage Stability:** -20° C/6 month,-80° C for long storage.

**Other Name:** Bcl-2-like protein 1 (Bcl2-L-1) (Apoptosis regulator Bcl-X)

**Background:** domain:The BH4 motif is required for anti-apoptotic activity. The BH1 and BH2 motifs are required for both heterodimerization with other Bcl-2 family members and for repression of cell death.

**Function:** response to reactive oxygen species, ovarian follicle development, response to hypoxia, in utero embryonic development.



**For Research Use Only**