



## Cyclin B1 protein

**E20-80120**

**Catalog No:** E20-80120

**Applications:** WB, SDS-PAGE

**Reactivity:** Human

**Gene Name:** CCNB1

**Protein Name:** Cyclin B1 protein

**Sequence:** Amino acid: 5-142, with his-MBP tag.

**Human Gene Id:** 891

**Human Swiss Prot No:** P14635

**Mouse Swiss Prot No:** P24860

**Formulation:** Liquid in PBS

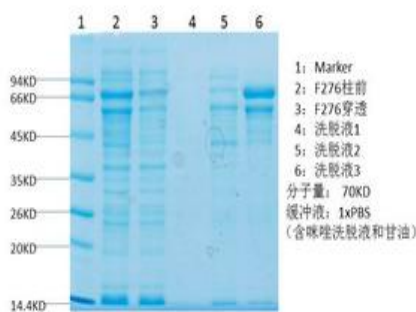
**Concentration:** SDS-PAGE >90%

**Storage Stability:** -20° C/6 month, -80° C for long storage.

**Other Name:** G2/mitotic-specific cyclin-B1

**Background:** developmental stage: Accumulates steadily during G2 and is abruptly destroyed at mitosis., function: Essential for the control of the cell cycle at the G2/M (mitosis) transition., PTM: Ubiquitinated by the SCF(NIPA) complex during interphase, leading to its destruction.

**Function:** G2/M transition of mitotic cell cycle, M phase of mitotic cell cycle, mitotic cell cycle, M phase, nuclear division, oocyte maturation.



SDS-PAGE of Cyclin B1 protein.

**For Research Use Only**