



## IL-6

E21-009

**Catalog Number:**E21-009

**Amount:**10ug

**Altername:**Interleukin-6; IL-6; B-Cell Stimulatory Factor 2; BSF-2; CTL Differentiation Factor; CDF; Hybridoma Growth Factor; Interferon Beta-2; IFN-Beta-2; IL6; IFNB2

**Storage/Stability:**Lyophilized protein should be stored at < -20°C. Aliquots of reconstituted samples are stable at -20°C for 1 year.

**Background:**Cytokines of the IL6/GCSF/MGF family are glycoproteins of about 170 to 180 amino acid residues that contain four conserved cysteine residues involved in two disulfide bonds. They have a compact, globular fold (similar to other interleukins), stabilized by the 2 disulfide bonds. One half of the structure is dominated by a 4 alpha-helix bundle with a left-handed twist; the helices are anti-parallel, with 2 overhand connections, which fall into a 2-stranded anti-parallel beta-sheet. The fourth alpha helix is important to the biological activity of the molecule. Interleukin-6 (IL-6) is an important proinflammatory and immunoregulatory cytokine expressed by various cells. Interleukin-6 has been shown to inhibit the growth of early stage and to promote the proliferation of advanced stage melanoma cells in vitro.

**Species:**Human

**Reconstitution:**Always centrifuge tubes before opening. Do not mix by vortex or pipetting.

It is not recommended to reconstitute to a concentration less than 100 µg/ml.

Dissolve the lyophilized protein in ddH<sub>2</sub>O.

Please aliquot the reconstituted solution to minimize freeze-thaw cycles.

**Endotoxin:**Less than 0.1 ng/µg (1 IEU/µg) as determined by LAL test.

**Purity:**Greater than 90% as determined by reducing SDS-PAGE.

**Description:**Recombinant Human Interleukin-6 is produced by our E.coli expression system and the target gene encoding Pro29-Met212 is expressed.

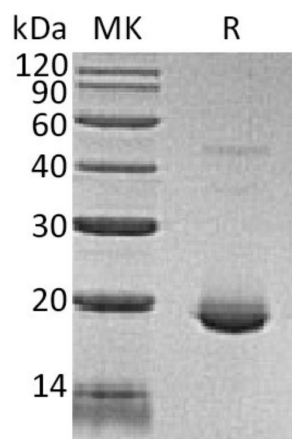
**Product State:**Lyophilized

**Ship Description:**The product is shipped at ambient temperature.

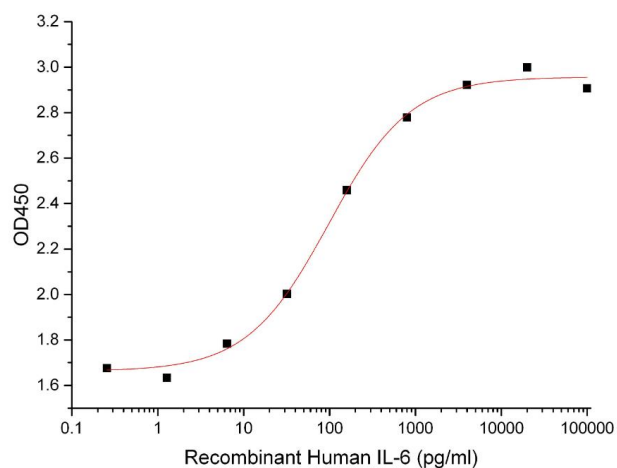
**Formulation:**Lyophilized from a 0.2 µm filtered solution of 20mM HAc-NaAc, 150mM NaCl, pH 5.0.

**Expression system:**E.coli

**For Research Use Only**



Greater than 95% as determined by reducing SDS-PAGE. (QC verified)



Measured in a cell proliferation assay using TF-1 human erythroleukemic cells. The ED<sub>50</sub> for this effect is 20-100 pg/ml. (QC verified)

**For Research Use Only**